

WOODWARD FAB

*Selling Quality
Metal Working
Equipment
Since 1966*

800.391.5419

Woodward-Fab.com



Phone 810.632.5419

Fax 810.632.6640

THROATLESS HAND SHEAR

- Throatless Design
- Cuts up to 3/16" Steel
- Shears up to 3/8" Round Bar
- Adjustable Work Hold Down
- Arched Top Blade Allows Effortless Cutting Throughout the Stroke
- Heavy Steel Frame

OUR TOP SELLER!

#SPHS8

8" Blade Length

\$125⁹⁹



#SPHS5

5" Blade Length

\$109⁹⁹

#SPHS10

10" Blade Length

\$159⁹⁹

#SPHS12

12" Blade Length

\$189⁹⁹



THROATLESS ROTARY SHEAR

- Crazy Shape Cutter
- Easily Cut Any Shape up to 1/8" Thick
- Forged Steel Frame
- Ratcheting Head
- Adjustable Cutter
- Adjustable Work Stop

\$199⁹⁹

#WFMS



Chris Womack
CW Restoration

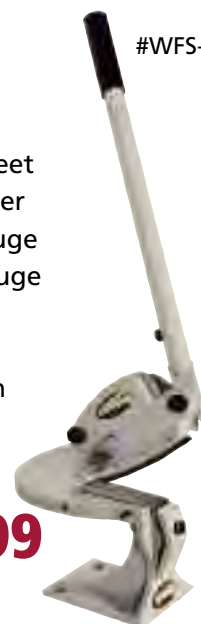


THROATLESS HAND SHEAR

- Multi-Purpose Sheet Metal/Plastic Cutter
- Cuts up to 14 Gauge Mild Steel, 18 Gauge Stainless Steel
- 5" Blade Length
- Geared Reduction Handle Makes Cutting Easy

\$239⁹⁹

#WFS-5



**We Know What
We Sell
Call Us!**

3-IN-1 MACHINE Bend-Roll-Shear All With One Machine

*Requires
Less Shop
Space!*



Youth Robotic Team

- 20 Gauge Thickness Capacity
- Hardened and Polished Ground Bending Fingers

EASY TO USE!



- Removable Fingers Allow Bending all Four Sides on a Box or Pan

- Quick Release Top Roller
- Solid Hardened Steel Rolls
- Rolls Also Offer Wire Grooves for Forming Wire
- Adjustable Blade Gap
- Heavy Cast Iron Frame and Bed
- Spring Loaded Sheet Hold Down
- Hinged Slip Roll Guard
- Back Gauge Included



Optional stand for
30" machine only

#SP3-1-3 STAND **\$159⁹⁹**

MODEL	LENGTH	FINGERS	ROLL DIA.	HANDLES	WEIGHT	PRICE
SP3-1-12	12"	1-1", 2-2", 1-3", 1-4"	1 1/4"	1	100#	\$299.99
SP3-1-30	30"	1-1", 1-2", 1-3" 1-6", 1-8", 1-10"	1 1/4"	2	375#	\$695.99
SP3-1-40	40 1/2"	1-1", 1-1 1/2", 1-2", 1-4", 1-7", 1-10", 1-15"	1 1/2"	2	575#	\$995.99
SP3-1-52	52"	1-1", 1-1 1/2", 1-2", 1-2 1/2", 1-4", 1-7", 1-9", 1-10", 1-15"	1 1/2"	2	860#	\$1795.99

Woodward Fab Metal Working Equipment

BEST!



#WFBP4812

BOX AND PAN BRAKE

- 48³/₄" Bed • 12 ga Capacity
- Heavy Duty Hardened and Ground Fingers
- Counter Balance Weights
- Stand Included
- Super High Quality
- 8 Removable Fingers
5 - 5", 3 - 4", 4 - 3"
- Maximum Box Depth
- Weight 1400 lbs.

\$2799⁹⁹



#WFBP4816

BOX AND PAN BENDING BRAKES

- Solid Heavy Duty Construction
- Reinforced Frame
- Hardened and Ground Fingers
- Finger to Bend Leaf Gap can be Adjusted
- Maximum Box Depth

#WFBP4816 48" x 16 gauge
16 Removable Fingers
5 - 2", 5 - 4" and 6 - 3"

\$799⁹⁹

#WFBP2420
24¹/₄" x 20 gauge
5 Removable Fingers
1", 2", 3", 8" and 10"

\$369⁹⁹



#WFBP2420

#WFBP4816 STAND **\$229⁹⁹**

#WF24 STAND **\$149⁹⁹**



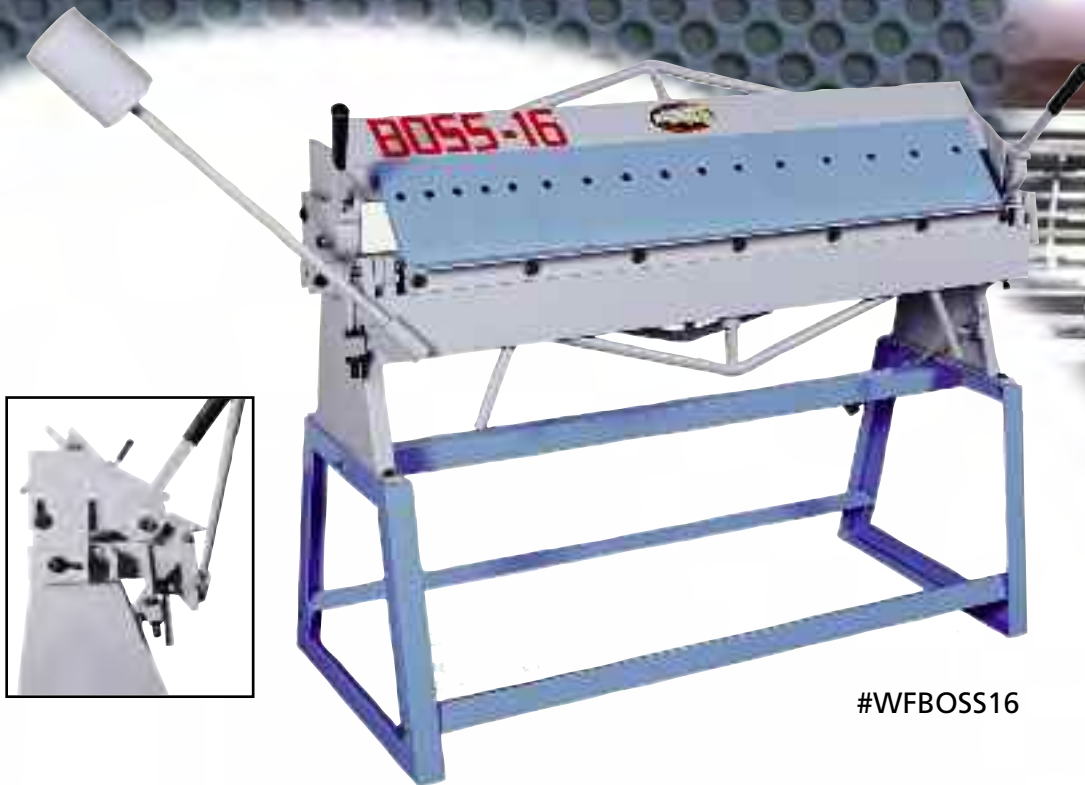
#WFBP1220

BOX AND PAN BRAKE

- 12" Length
- 20 Gauge Capacity
- 5 Hardened, Removable Fingers
- Cam Lock Handle
- Weight 65 lbs.

\$259⁹⁹

#WFBP1220



#WFBoss16

BOSS - 16 BOX AND PAN BRAKE

This new machine is the BOSS among 16 gauge brakes. The BOSS-16 features the world's thickest fingers to prevent deflection making more accurate bends possible. It also features extra heavy trusses and braces for added strength and bronze bearings at pivot points.

- Capacity 16 Gauge (1/16") Mild Steel, 20 Gauge Stainless Steel
- Maximum Box Depth 4"
- Removable Fingers 2", 3", 4"
- Bend Angle Stop - 0 to 130 Degrees
- Floor Stand Included
- Counterweight Included
- Upper Beam, Adjustable for Radius Bending

#WFBoss16

Length 48 1/4"

Weight 590 lbs.

\$1249⁰⁰



Gene Winfield
Hot Rod Legend

SHEET METAL BENDING BRAKES

- 36" Length Straight Brake
- 18 Gauge Capacity Mild Steel, 16 Gauge (1/16" Aluminum)
- Bends up to 120 Degrees
- Dual Cam Lock Hold Down Handles
- Includes Floor Stand
- Weight 170 lbs.

\$399⁹⁹

*Make Bends
like a pro!
Easy to operate!*



*Make professional
brackets fast!*

#WFB36

#WFB72



\$995⁹⁹

- 72" Length Straight Brake
- 18 Gauge Capacity Mild Steel
- Bends up to 120 Degrees
- 43" Overall Height
- Includes Floor Stand
- Weight 420 lbs.

EURO STYLE STRAIGHT BRAKES

#WFSB6.5

- Bending Length 79½"
- Weight 1360 lbs.

\$3490⁰⁰

HANDY OPERATOR FEATURES:

- Super Smooth, Almost Effortless Bending
- Air/Hydraulic Assist "No Counterweights Needed"
- Adjustable for Varying Material Thicknesses
- Clamps Work Pieces Secure
- Bend up to 20 Gauge Mild Steel
- Bends up to 120 Degrees
- Heavy Duty Anti-Twist "Boxed" Upper Beam
- Floor Stand Included



#WFSB8.0

- Bending Length 98½"
- Weight 1650 lbs.

\$4590⁰⁰



Dan Wood
Cut-Chop-Rebuild TV

#WFBP5014



EASIER TO BEND!

TOP OF THE LINE!

\$3295⁰⁰

#WFBP5014-R

BOTH TOP AND BOTTOM FINGERS
ARE REMOVABLE FOR CUSTOM
BENDS

EURO STYLE BRAKE

- 50" Box and Pan Brake
- 14 Gauge Capacity Mild Steel
- Air Cylinder Assist "No Need for Weights"
- Adjustable Hold Down Force
- Adjustable Bend Gap
- Foot Operated Locking Hold Down
- Hardened and Ground Fingers

\$2695⁰⁰

#WFBP5014



Shipping weight
800 pounds



#WFBP5014-R



#WFB24

BUDGET BENDING

- Straight Bending Brake
- Bend up to 20 Gauge Mild Steel
- Upper Beam Adjustable to Create a Radius, When Bending Aluminum

\$129⁹⁹

#WFB24



HYDRAULIC CORNER NOTCHERS

- Blades 8 $\frac{5}{8}$ " x 8 $\frac{5}{8}$ "
- Notch up to 4mm Mild Steel (.157")
- Notch up to 3mm Stainless Steel (.118")
- Up to 50 Strokes Per Minute
- 12 Tons of Power
- Table Top 25" x 25"
- Includes Adjustable Table Stops, Foot Control
- 220 Volt Single Phase Electric

#WFCN4

Mild Steel Capacity 4mm (.157")
Stainless Capacity 3mm (.188")

\$8995⁰⁰

#WFCN6

Mild Steel Capacity 6mm (.236")
Stainless Capacity 4mm (.157")

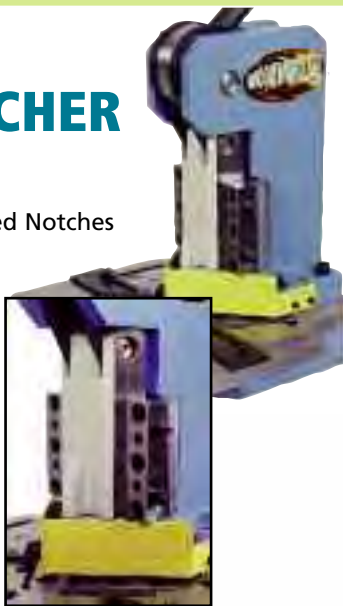
\$12900⁰⁰

SHEET METAL CORNER NOTCHER

- 1/8" Capacity Mild Steel
- 4" x 4" Blades
- With Multiple Hits Any Sized Notches Can be Made
- Adjustable Work Stops
- Adjustable Gibs for Wear
- High Quality High Speed Steel Blades
- Weight 250 lbs.

#WFCN125

\$1295⁰⁰



Cuts like
butter!
Ask us how

SQUARE CORNER NOTCHER

- Foot Operated
- 16 Gauge (1/16") Capacity Mild Steel
- 3" x 3" Blades
- Adjustable Work Stops
- Adjustable Blade Gap
- Any Sized Notch Can be Made with Multiple Hits

\$699⁹⁹

#WFSN

#TT100



TUBE STRAIGHTENER

- Restores Mild Distortions
- Works 3/16" up to 1/2" Round Tubing
- Straightens Coiled Tubing Fast Using the 5 Wheel Design
- Constructed from No-Twist 1/4" Thick Steel Plate
- Non Marring Delrin Wheels
- Mount to a Bench Top or Clamp in a Bence Vise

\$179⁹⁹

CORNER NOTCHER

- 16 Gauge Capacity Mild Steel
- 6" x 6" Blades
- Adjustable Work Stops
- Adjustable Blade Gap
- High Chrome Blades
- Adjustable Gibs for Long Life
- Heavy Cast Iron Frame
- Weight 200 lbs.

\$589⁹⁹



#SPNOTCHER



#WFSR24

SLIP ROLL

- Solid Precision Ground Rollers not Tubing
- Heavy Cast Iron Frame
- Quick Release Top Roll
- Hardened Steel Gears
- Easy To Use
- Each Machine also Features Wire Grooves for Wire Rolling

#WF24 STAND 24" Stand **\$149⁹⁹**
 #WFSR40-S 40" Slip Roll Stand..... **\$199⁹⁹**
 #WFSR50-S 50" Slip Roll Stand..... **\$219⁹⁹**

24" Length
 20 Ga Capacity
 1 1/2" Diameter Rolls
\$395⁹⁹

#WFSR24

50" Length
 16 Ga Capacity
 3" Diameter Rolls
\$1499⁹⁹

#WFSR50



#WFSR12

12 INCH SLIP ROLL

- 1 1/4" Diameter Hardened Rolls
- 1/16", 1/8", 3/16" Wire Grooves for Rolling Wire Also

12" Length
 20 Ga Capacity
\$159⁹⁹

41 1/2" Length
 20 Ga Capacity
 2" Diameter Rolls
\$669⁹⁹

#WFSR40



#WFSR40

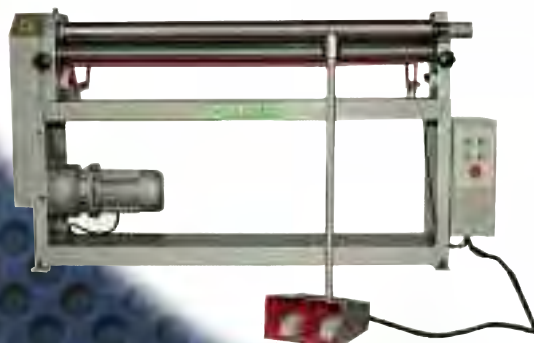
12 INCH SLIP ROLL

- Super Slim 1" Diameter Solid Steel Rolls for Rolling Extra Small Radii
- 20 Gauge Capacity
- Includes 1/16", 1/8", and 3/16" Wire Grooves for Rolling Wire Also



#WFSR1.0

\$239⁹⁹



POWER SLIP ROLL

- 51" Length Rolls
- Roll Diameter 3"
- Maximum Capacity 16 Gauge
- 2 HP, 220 Volt Single Phase
- Weight 800 Pounds

\$3195⁰⁰

#WFSR5116P

Elite SLIP ROLLS



#WFSRELITE24
Length 24"
Weight 475 lbs.

\$1195⁰⁰

- Capacity 16 Gauge (1/16") Mild Steel, 20 Gauge Stainless Steel
- Hardened and Ground Rolls
- 2 3/8" Diameter Drive Rolls
- 2 1/2" Rear Adjustable Roll

#WFSRELITE41
Length 41" - 550 lbs.

\$1595⁰⁰

#WFSRELITE50
Length 50 1/2" - 565 lbs.

\$1995⁰⁰

**We Know What
We Sell! Call Us!**

With the Elite roll you can select from 2 different speeds. We have added another spindle to the gear box so by changing the crank handle position, you can either roll thin material or select gear ratio for rolling thicker material with ease.

- Uses a Single Front Mounted Hand Wheel for Adjusting the Rear Roll for Varying Radii
- Also Uses a Single Hand Wheel to Adjust the Bottom Wheel for Material Thickness
- With a Single Handle, the Upper Roll Will Lift to Remove Work Pieces
- With a Simple Adjustment, you can also Roll Tapers up 15 Degrees
- Longitudinal Groove the Length of the Top Front Roll for More Aggressive Forming
- Fully Enclosed Gear Box, Cast Iron End Plates
- Wire Grooves for Rolling Wire 1/16", 1/8", 3/16", 1/4"
- Floor Stand Included



Billy Lane Master Fabricator and Motorcycle Creator



Woodward Fab Metal Working Equipment

#WFP12



#WFP12 STAND
Floor Stand with casters 29" Height
Weight 80 Pounds
\$199⁹⁹

MULTI PRESS

SUPER HEAVY DUTY

- Features 2" Diameter Ram
- Constructed from 1/2" Thick Plate
- Creates up to 3 Tons of Force
- Throat Depth 12"
- Throat Height 7 1/2"
- Maximum Opening 4 1/2"
- Table 4" x 7"
- Handle 30"
- Size 21" Deep x 19" High x 5" Wide
- Weight 165 Pounds

\$449⁹⁹ #WFP12



#WFP12-L
Louwer Tool
3/16" x 2 1/4"
• Cuts up to .040
Mild Steel or 1/16"
Aluminum
\$399⁹⁹



#WFP12-N
Corner Notcher
1 1/4" x 1 1/4"
• Notch up to 1/16"
Steel
\$159⁹⁹



#WFP12-B
Bending Brake Die
4" Length
• Bend up to 3/16"
Steel
\$149⁹⁹



#WFP12-S
Shear Die
4 1/8" Length
• Cuts up to 1/16"
Steel
\$159⁹⁹

#PR103

#PR104



PROFESSIONAL HYDRAULIC SHOP PRESS

ALL THE FEATURES YOU LOOK FOR IN AN INDUSTRIAL PRESS

- Convenient Hand Pump
- Heavy Duty Ram
- Easy to Read Pressure Gauge
- Thick Bed
- Wide Frame
- Press Plates Included

10 Tons
41" Height
7" Stroke
14 1/2" Inside Frame
120 Lbs. Weight

\$349⁰⁰

#PR102

12 Tons
61" Height
7" Stroke
18 1/2" Inside Frame
165 Lbs. Weight

\$379⁰⁰

#PR103

20 Tons
69" Height
7 1/2" Stroke
19 1/2" Inside Frame
220 Lbs. Weight

\$499⁰⁰

#PR104



#PR102

**We now make custom dies for all
bead rollers and rolling machines!**



TUBING ROLLER

1" Diameter = 9" Radius
1 1/2" Diameter = 15" Radius
2" Diameter = 30" Radius

- Chain Drive Bottom Rolls
- Adjustable Height Stand
- Includes 1", 1 1/2" and 2" Round Tube Dies
- Works up to .090" Wall Thickness Mild Steel or 1/8" Aluminum
- Weight 200 Pounds

\$739⁹⁹



#WFTR4

FLAT BAR ROLLING MACHINE

- Roll up to 1/4" x 1 3/4" Flat Bar Solids
- Roll up to 1 1/2" x 1 1/2" x 1/16" Square Tube
- Adjustable Square Tube Die 1/4" to 1 1/2"

\$329⁹⁹



#WFTR45

ROLLING MACHINE

- Roll up to 1 1/2" Tubing as Small as 20" Diameter
- Includes 1 1/2" Tube Die
- Works up to .080" Wall Round Tube

\$499⁹⁹

PIPE/TUBE BENDING KIT

AS SEEN ON TRUCKS! TV



\$239⁹⁹

#SPBENDKIT

- Make Smooth Kink Free Bends Easy
- Rugged Cast Iron Construction
- Threaded Adjustment
- Extension Handle
- Mount to a Bench Top or Clamp in a Vise
- Kit Includes Storage Case, Cast Iron Base, Handle
- Cast Iron Dies 3/8", 1/2", 5/8", 9/16", 3/4", 7/8" for Rounds and 3/4", 1" for Square Tube

BEST SELLER!

MANUAL TUBE AND PIPE BENDER

- Bends up to 2" Diameter Tubing
- CNC Machined Components
- 36" Height
- Includes 36" Handle and Degree Ring

\$299⁹⁹ #WFB2



Stand must be secured to the floor or heavy plate for operation



#WFB2 STAND
\$99⁹⁹



Rick Dore

HYDRAULIC PIPE AND TUBE BENDER

- Bends up to 2 Inch Diameter
- Degree Ring • Casters
- 110 Volt, 300 Pounds
- Uses Same Dies as Manual Machine

\$2195⁰⁰

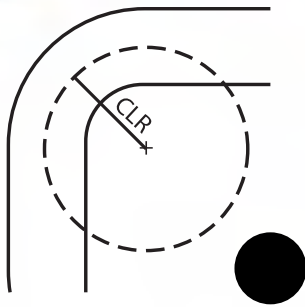
#WFPB1000



#WFPB1000

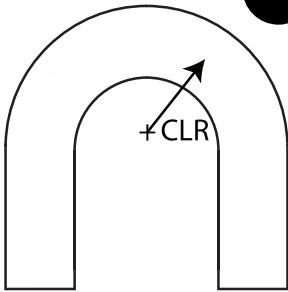


Sam Memmolo
"Motor Head Garage"



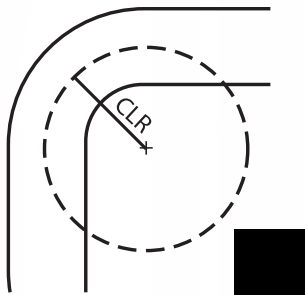
120 Degree Bending Dies - Round Tube

ITEM	O.D.	CLR	MIN WALL	MAX WALL	PRICE
WFBDT3/4X3	3/4"	3"	0.060"	0.134"	\$147.00
WFBDT7/8X3	7/8"	3"	0.060"	0.134"	\$147.00
WFBDT1X3	1"	3"	0.068"	0.134"	\$149.00
WFBDT11/8X3	1 1/8"	3"	0.085"	0.134"	\$169.00
WFBDT11/4X4	1 1/4"	4"	0.060"	0.134"	\$189.00
WFBDT11/2X5	1 1/2"	5"	0.060"	0.134"	\$199.00
WFBDT15/8X5	1 5/8"	5"	0.060"	0.134"	\$199.00
WFBDT13/4X6	1 3/4"	6"	0.060"	0.134"	\$229.00
WFBDT2X6	2"	6"	0.060"	0.134"	\$269.00



180 Degree Bending Dies - Round Tube

ITEM	O.D.	CLR	MIN WALL	MAX WALL	PRICE
WFBDT3/4X3-180	3/4"	3"	0.065"	0.134"	\$205.00
WFBDT1X3-180	1"	3"	0.065"	0.134"	\$220.00
WFBDT11/4X4-180	1 1/4"	4"	0.065"	0.134"	\$260.00
WFBDT11/2X5-180	1 1/2"	5"	0.065"	0.134"	\$290.00
WFBDT15/8X5-180	1 5/8"	5"	0.065"	0.134"	\$340.00
WFBDT13/4X6-180	1 3/4"	6"	0.065"	0.134"	\$350.00
WFBDT2X6-180	2"	6"	0.065"	0.134"	\$395.00



120 Degree Bending Dies - Square Tube

ITEM	O.D.	CLR	MIN WALL	MAX WALL	PRICE
WFBDS1/2X3	1/2"	3"	0.065"	0.085"	\$175.00
WFBDS3/4X4	3/4"	4"	0.065"	0.085"	\$200.00
WFBDS1X4	1"	4"	0.065"	0.085"	\$200.00
WFBDS1X6	1"	6"	0.065"	0.085"	\$245.00
WFBDS11/4X5	1 1/4"	4"	0.065"	0.085"	\$225.00
WFBDS11/2X6	1 1/2"	4"	0.065"	0.085"	\$280.00

Custom Dies are Fast and Affordable!
Just send us a sketch, clay mold or a sample.



POWER RING ROLLING MACHINES



#WFRP30

- Horizontal or Vertical Operation
- 30mm Spindles
- Speed 9 rpm
- 1½ HP, 220 Volt Single Phase
- Includes Dies for Rolling Flat Solids
- Rolls up to 2" x .078" Wall Round Tube, ¾" Solid Square, 1/2" x 3" Flat Bar, 3/16" x 1½ Angle Iron With Correct Dies
- Weight 650 Pounds



\$3295⁰⁰

#WFRP30

ADDITIONAL TOOLING AVAILABLE

Max size	Min diameter	
15mm	24"	#WFPR154\$540.00
20mm	round	
25mm		
30mm		
1½" x 1½" x 3/16"	16" angle out	#WFPR155\$580.00
1½" x 1½" x 3/16"	16" angle in	#WFPR156\$580.00
35mm, 40mm, 45mm,		
50mm, 55mm, 60mm		#WFPR1511\$1490.00



#WFRM50

POWER RING ROLLING MACHINES

- 40mm Spindles
- Speed 9 rpm
- Includes Universal Die Set
- 2 HP 220V 3 Phase
- Rolls up to 2¾" Round Tube, 1½" Solid Square, ¾" x 2¾" Flat Bars With Correct Dies
- Weight 1050 Pounds

\$4959⁰⁰

#WFRM40

- 50mm Spindles
- Speed 13 rpm
- Includes Universal Die Set
- 3 HP 220V 3 Phase
- Rolls up to 2¾" Round Tube, 1½" Solid Square, 1½" x 3" Flat Bars With Correct Dies
- Weight 1325 Pounds

\$5590⁰⁰

#WFRM50

We also make custom dies to your specifications. We can even supply Nylon dies to prevent marring when bending polished stainless steel or aluminum.



Customizer legend Gene Winfield and sales manager John Jones at SEMA

**THIS IS THE FASTEST
AND EASIEST WAY TO
MAKE ANGLED NOTCHES!**

PIPE NOTCHER

- 4" Belt Notcher
- Quick Notching of Pipe/Tube from 1/2" to 2 1/2"
- Adjustable Angle 30 - 90 degrees
- Uses Standard Size Belts
- Top Platen for Flat Work
- 4 HP 220 Volt Single Phase
- Centering Vise

\$2895⁰⁰ #WFN5

Extra Contact Wheels at \$115.00 ea.

**MAKE A NOTCH
IN SECONDS!**



TUBE/PIPE NOTCHER

- Use with any Drill Motor Hand Held or Drill Press
- Create any Angle Saddle Notch on Pipe for Weld Fit-Up
- Uses Standard Hole Saw Blades up to 2 1/2"
- Compound Angle Adjustment up to 60°
- Chrome Plated Frame
- Easy to Read Angle Scales
- Long Life Bronze Bearing
- Holds up to 2" Pipe

\$91⁹⁹ #SPPIPE



**BETTER
QUALITY!**

PIPE/TUBE NOTCHER

- Solid Steel Construction
- Works 3/4" to 3" Tubing (o.d.)
- Use with Any 1/2" Hand Drill
- Accepts Standard Hole Saw Cutters
- Hardened and Ground Spindle
- Superior Needle Bearing Support
- Adjustable Angle to 50 Degrees with Engraved Scale
- Mount to Bench Top or Clamp in a Bench Vise

\$229⁹⁹

#WFN6





**The Perfect
welders tool
for Perfect
contour fits**

PIPE MASTER®

★USA★

- Transfers the Exact Outline of the Pipe Joint
- Exact Fit-ups of Rounds to any Shape Including Squares, Angles and Flat Plate • Easy to Use!
- Quality Made with Stainless Steel Pins

P-100	1" Pipe - Pipe Master	\$43.00
P-125	1 1/4" Pipe - Pipe Master	\$49.00
P-150	1 1/2" Pipe - Pipe Master	\$56.00
P-200	2" Pipe - Pipe Master	\$57.00
P-250	2 1/2" Pipe - Pipe Master	\$110.00
P-300	3" Pipe - Pipe Master	\$115.00
P-T075	3/4" Tube - Pipe Master	\$40.00
P-T100	1" Tube - Pipe Master	\$42.00
P-T125	1 1/4" Tube - Pipe Master	\$44.00
P-T150	1 1/2" Tube - Pipe Master	\$49.00
P-T175	1 3/4" Tube - Pipe Master	\$54.00
P-1 KIT	1" Pipe, 1 1/4" Pipe, 1 1/2" Pipe, 2" Pipe Tools and Plastic Case	\$205.00
P-SC	1 3/4" Tubing, 1 1/2" Tubing	\$103.00
P-DR	1 5/8" Tubing, 1 1/2" Tubing	\$98.00

WELD GRINDER SHAVER

#WFBFG

- Removes Weld Beads From Butt Welds - FAST!
- Grind Off Bolts and Rivets
- Uses Standard 3" x 78" Abrasive Belt
- FAST, FAST The Belt Moves at 7000 Surface Feet Per Minute
- Adjustable Grind Height
- Easy to Adjust Belt Tracking
- Adjustable Handle Position
- 3 HP, 220V Single Phase Electric
- Weight 250 lbs.

\$2399⁰⁰



TUBE & PIPE NOTCHER

- Make Perfect Fit 90° Notches
- Easy, One-Pull on the Handle will Produce Accurate Saddle Notches for Weld Fit-Up
- Notch up to Schedule 40 Pipe
- Portable and Easy to Mount to any Surface or Bench Vise
- No Set-Up Needed, Simply Insert Pipe Into Correct Die Size Hole and Pull Down on the Handle

WFN1
1/4", 3/8", 1/2" Pipe
3/8", 1/2", 3/4" Tube **\$289⁹⁹**

WFN2
3/4", 1", 1 1/4" Pipe
1", 1 1/8", 1 1/2" Tube **\$369⁹⁹**

WFN3
1 1/2", 2" Pipe
2", 2 3/8" Tube **\$489⁹⁹**

PIPE/TUBE POWER NOTCHER



#WFN4

- All the Sizes in One Machine
- Notches 1/4", 3/8", 1/2", 3/4", 1", 1 1/4", 1 1/2" and 2" Schedule 40 Pipe
- Gear Drive
- 38 Strokes per minute
- Ideal for High Production 90 Degree Notching
- Weight 215 lbs.
- Photo Shows Machine with Required Guard
- 220 Volt Single Phase

\$2995⁰⁰

VENT NOTCHER

- Quickly Makes Vent/Weep Notches in Metal Tubes
- Use When Painting or Galvanizing
- Notch 1" and Larger Tube with up to 5/32" Wall

\$499⁹⁹

#WFN7



Includes Handle & Wall Mount Hardware

3" BELT SANDER

For Fast Grinding and Sanding

- Surface belt speed is a whopping 7000 feet per minute
- Adjustable angle stand
- Top platen for flat work and small parts
- Adjustable work rest with eye shield
- Rubber front contact wheel for fastest stock removal
- 3 HP 220 Volt Single Phase
- Uses Standard 3" x 78 3/4" belts

\$1195⁹⁹



#WFBG3



MANUAL IRON WORKER

\$549⁹⁹

#WFIW

Handle is 6' Long,
Allow for Ceiling
Height if Bench
Mounted

*"One of the
handiest
machines in
the shop"*



- Adjustable Hold Downs
- Cast Iron Frame
- Gear Drive Cam
- Weight 250 lbs.
- Throatless Shear Cuts up to 5/16" Plate

- Shears up to 3/4" Rods, Round and Square
- Shears Angle Iron up to 2 1/4" x 3/16"
- Shears T Iron up to 2 1/4"
- 4" Long High Chrome Shear Blades



MANUAL PUNCH



- 6 1/4" Throat Depth
- Punch up to 3/16" Thick Steel
- Gear Drive Cam = Less Effort Needed
- Weight 200 lbs.
- Includes a Complete Set of Punches:
1/8", 3/16", 1/4", 5/16",
3/8", 7/16", 1/2", 9/16",
5/8"

\$599⁹⁹ #WFP20

ELECTRIC HYDRAULIC PRESS



#WFEHP10

- 10 Ton Capacity
- 25" Throat
- Hand Toggle Up and Down Control
- Use for Louvering, Pressing and Forming
- 110 Volt Electric • Height 48"
- Weight 795 lbs.

\$2595⁰⁰

Woodward-Fab Friends!



Sam Memmolo & Bryan Fuller





HIGH IMPACT NYLON BOSSING MALLET

- Hard as a Baseball Bat
- 13 1/2" Hickory Handle
- 18-oz. Weight
- 3" Diameter

\$29⁹⁹

#WFBOSMAL



WOOD SHAPING BOSSING MALLET

- For the "Old School" Classic Metal Worker
- 13 3/4" Overall Length
- 12-oz. Weight
- 3" Diameter
- Hickory Handle & Head #WFWBOS

\$39⁹⁹



WOOD SHAPING MALLET

- Hickory Handle and Reinforced Head
- 13 1/2" Overall Length
- 13-oz. Weight
- 2" FACE

\$36⁹⁹

#WFWM

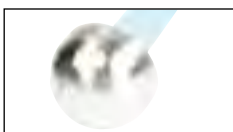


LEATHER SHOT BAGS

- Long Lasting Top Grain Cowhide .070 - .090 thick
- Fill with either #8 or #9 Lead Bird Shot for best Flow or Silica Sand (not included)

#WFSBS	8" SHOT BAG	\$19⁹⁵
#WFSB12	12" SHOT BAG	\$32⁹⁵
#WFB18	18" SHOT BAG	\$51⁹⁵

We Know What We Sell! Call Us!



DOLLY DOME

\$85⁰⁰

#DOLLY DOME

PROFESSIONAL SHOT BAG STAND

- 34" High
- 19" Diameter Shot Bag (sold separately)
- Heavy Duty, Perfect for the Professional Heavy Welded Steel Top Plate
- Hammer Storage Rack
- Weight 57 lbs.

\$199⁹⁹

#WFSBS18



T-DOLLY STAND

- Accepts Any Sized Dollies with a Shank Size up to 1 3/4" x 2 1/2"
- Use for Forming Metals Using Hammers and Slappers
- Features Nice Tool and Mallet Holders

Forming Head Shown on Top is Sold Separately

\$199⁹⁹

#WFDOLLYSTAND



Clamp in bench vise or use dolly stand

BOWL SHAPED FORMING HEAD

- 6" Diameter
- Solid Polished Steel
- Holding Shank Size 1 1/2" x 1 1/2"

\$109⁹⁹

#WFDOLLYBOWL



TANK SHAPED FORMING HEAD

- 6" x 11" Diameter
- High Polished Alloy
- Holding Shank Size 1" x 2 1/2"

\$189⁹⁹

#WFDOLLYTANK



DAGGER TOOL 3-PC. KIT

- 12" Leather Shot Bag
- 2 1/2" Bossing Mallet
- 12 Pounds Fill Sand

\$59⁹⁰

#SHAPEIT-9



DAGGER TOOL 6-PC. KIT

- 12" Leather Shot Bag
- 2 1/2" & 3" Bossing Mallets
- 2 1/2" Barrel Mallet
- 3 1/2" Wood Mallet
- 12 Pounds Fill Sand

\$156⁹⁵

#SHAPEIT-13



DAGGER TOOL TRIM REPAIR KIT

- For Stainless Steel and Aluminum
- 8" Leather Shot Bag
- 1 1/2" Plastic Blending Mallet
- 1 1/4" Correcting Hammer
- 5/8" Trim Hammer
- 1/4", 1/2" and 3/4" Chasing Chisel

\$92⁹⁵

#TRKIT-2

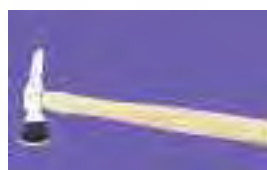


TRIM REPAIR 2-PC. KIT

- Includes Correcting Hammer and Hand Anvil

\$33⁹⁵

#DMSO-KIT



SHRINKING HAMMER

- 16-oz. Metal
- Spiral Face Design Shrinks Metal on Impact
- Opposite End Features a Cross Chisel Face
- Hickory Handle

\$39⁹⁹

#WFSHRINKH

As Seen on Trucks, TV!



#Model 3C

★USA★

Heck
PRODUCTS, INC.

TRACE-A-PUNCH® NIBBLERS

- Cuts Any Shape Metal or Plastic
- Follows an Original Part or Template to Make Part After Part
- Distortion and Burr Free Cutting at 40" Per Minute
- Heavy Fine Grain Cast Meehanite Frame
- All Components Hardened and Ground
- Machines Include 1 Punch and Die, Work Light, Material Clamps, Nibble Lube and Instructions

Model 3C

- 1/8" Maximum Thickness Steel
- 6 3/4" Throat Depth
- 1 1/2 HP, 110 Volt
- Weight 150 lbs.

\$2195⁰⁰

Model 4

- 3/16" Maximum Thickness Steel
- 16" Throat Depth
- 3 HP, 220/440 Volt 3 Phase
- Weight 500 lbs.

\$3880⁰⁰



#Model 4

Video Available



Bubba

from Bubba's East Coast Customs

AS SEEN AT SEMA



#TB400

★USA★

Heck
PRODUCTS, INC.

TRACE-A-PUNCH® TUBING NIBBLER

- Cut Any Tubing up to 1/8" Wall Thickness
- Cut Free Hand or Follow a Template
- Ideal for Odd Angle Weld Fit-Ups
- Includes 1 Anvil, 1 Punch and Die, Work Light, Nibble Lube & Instructions
- 1 1/2 HP, 110 Volt

\$2695⁰⁰

Call for Various Tube Diameter Anvils

Woodward-Fab Friend!



Barry White
"Wrecks to Riches" TV

Woodward Fab Metal Working Equipment



Model #9000



Model #7000/8000

Heck **BEVEL-MILL®**

- Plate Bevelers for Weld Preparation
- Fast, Accurate Cutting and Easy to Use
- Adjustable Bevel Angle 15-45 degrees
- Special Design BALDOR 110 Volt Motors
- Uses Standard Square Carbide Inserts with 4 Cutting Edges
- Includes Carbide Cutters, Pipe Beveling Attachment, Bevel Lube and Instructions

★USA★

Part	Description	Price
7000	3/8" Maximum Bevel Depth, 1/2 HP	\$1795⁰⁰
8000	5/8" Maximum Bevel Depth, 1 HP	\$2395⁰⁰
9000	7/8" Maximum Bevel Depth 1 1/2 HP	\$2895⁰⁰



★USA★

#WS625

\$1895⁰⁰

WELD SHAVER

- Machine Weld Beads Flush to Work Piece
- Fast Cutting at 6' per Minute
- Adjustable Depth of Cut
- Uses Milling Cutter with Carbide Inserts
- Eliminate Grinding and Mistakes
- Width of Cut 1/2" in a Single Pass

★USA★

#WS90



Heck
WOODWARD-FAB, INC.

WELD SHAVER

Woodward-Fab,
Heck Exclusive
Patented



- Removes Both Flat "Butt" Joint Welds and Inside 90 Degree Corner "Fillet" Welds
- Uses Carbide Inserts in a Milling Cutter
- Visit Our Website to See The Video

#WS90

\$985⁰⁰



Bevel at 10-Ft. per Minute!

POWER FEED PLATE BEVELERS

CALL FOR DETAILS!



DUCT CUTTER

- Ideal for Duct Work
- Maximum Steel Plate Thickness
- Mild Steel 16 ga .062
- Stainless Steel .040
- Aluminum .080
- Cutting Speed 6½ fpm
- Weight 5 Pounds
- 110 Volt

\$1095⁰⁰ #SD-16



SHEAR

- Ideal for Fast Roofing and Siding!
- Maximum Cutting Plate Thickness
- Mild Steel .040
- Cutting Speed 27 fpm
- Weight 5 Pounds
- 110 Volt

\$985⁰⁰ #SL-16



SHEAR

- Cuts Mild Steel 16 ga .062
- Stainless Steel .050
- Aluminum .080
- Cutting Speed 25 fpm
- Weight 5 Pounds
- 110 Volt

\$1195⁰⁰ #SA-16



#SG-230B

Head Swivels, Ideal for corrugated steel

NIBBLER

- Cuts Mild Steel 14 ga .080
- Stainless Steel .050
- Aluminum .120
- Cutting Speed 4½ fpm
- Cutting Width 1/4"
- Weight 5¼ Pounds
- 110 Volt

\$1295⁰⁰



#SN-320B

NIBBLER

- Cuts Mild Steel 1/8" .125
- Stainless Steel .098
- Aluminum .230
- Cutting Speed 6½ fpm
- Weight 8 Pounds
- 110 Volt

\$1695⁰⁰



#SN-600B

NIBBLER

- Cuts Mild Steel up to .236
- Stainless Steel .157
- Aluminum .314 (5/16")
- Cutting Speed 6½ fpm
- Weight 15½ Pounds
- 110 Volt

\$2695⁰⁰



#SN-800G

NIBBLER

- Cuts Mild Steel 5/16" .314
- Stainless Steel .240
- Aluminum .400
- Cutting Speed 5 fpm
- Weight 39 Pounds
- 110 Volt

\$5875⁰⁰

BEVELING/DEBURRING MACHINE

#BB125



- Make Chamfers on any Metal up to 3/16" Deep
- Uses Carbide Inserts in a Milling Cutter
- Adjustable Depth of Cut
- 1/2 Horsepower, 110 Volt Electric

\$899⁹⁹

#NIB20



HAND OPERATED NIBBLER

- Handy Tool
- Cuts up to 20 Gauge Mild Steel, 18 Gauge Aluminum or 5/64" Plastics or Vinyl Flooring
- .100 Nibble Width



\$69⁹⁹



★USA★

PLASMA•PAL® HOLE AND CIRCLE CUTTER

- Simple Operation
- Cut Aluminum, Mild Steel, Stainless
- No Minimum Plate Thickness
- Unique Cam Adjustable Hole Size Settings
- Faster Than Conventional Hole Cutters
- Eliminates Free Hand Cutting
- Eliminates Expensive Mag Drill Cutters
- Variable Speed Control to match Correct Cutting Speed with Plate Thickness
- Quick-Snap Attachable Torch
- High Quality Brass Gear Drive

\$925⁰⁰ #P3 **\$1895⁰⁰** #P8



Heck
INDUSTRIES, INC.

★USA★



Quick and Easy Set-UP

- Attach Provided Collar to Torch
- Snap Torch to Cam Block
- Adjust to Hole Size Desired
- Turn On Torch and Adjust Plasma•Pal Speed Setting
- Watch Your Hole Cut Automatically



Model P3: • Hole size 1/2" to 3" • Weight 16 lbs
• Maximum torch diameter to fit collar 1 1/8"
• Motor 3 amp 110 volt • Height 7.75" x 9" Length
x 5" Width

Model P8: • Hole size 1/2" to 8" • Weight 33 lbs.
• Maximum torch diameter to fit collar 1 1/2"
• Motor 3 amp 110 volt • Height 7.75" x 14.5"
Length x 11" Width



TRACK TORCH

- Cut up to 2" Thick Plate
- Cut Straight and up to 45 Degree Bevels
- Cuts up to 30" Per Minute
- Solid State Variable Speed Control Allows Cutting at Precise Speeds for High Quality Cutting
- Includes Torch, Torch Tips, Hoses, 6' Track, Instructions
- 110 Volt
- Weight 27 Pounds

\$795⁰⁰ #HK-12

EXTRA TRACK 6' LENGTH
#HK-12-1 **\$75⁰⁰**



SPECIAL PRICE!

90° CAST IRON WELDING CLAMPS

- Rear Jaw Swivels & is Self Centering for Holding Different Size Pieces
- Slotted Holes for Bench Mounting • Copper Plated Acme Screw
- Machined Surfaces *"Better than the competition that sells for 3 times our price"*

Part	Maximum Opening	Weight	Price
C-2.3	2 3/8"	12 lbs	\$56⁹⁹
C-40	4"	28 lbs	\$79⁹⁹



#C1-100

#C2-200

"These are the finest clamps anywhere"

AS SEEN ON TRUCKS! TV

Heck INDUSTRIES, INC. VARIABLE ANGLE CLAMP

- Ratcheting Angle Adjustment with Detents every 15 Degrees • Patented Design
- Holds Rounds or Flats
- Super Lightweight from Billet Aluminum
- Precision Machined • Anodized Finish

Part	Maximum Opening	Weight	Price
C1-100	7/8"	1 1/4 lbs	\$99⁹⁹
C2-200	2"	4 1/4 lbs	\$129⁹⁹



#WFMC

MAGNETIC WELD POSITIONING CLAMP

- Easy On/Off Switch - No Power or Batteries Required
- 4 3/4" Edges
- Holds Parts at Crazy Angles for Welding

\$19⁹⁹

DEEP THROAT SHRINKER/STRETCHER

- Works up to 18 Gauge Mild Steel and 16 Gauge Aluminum
- 8" Throat Depth
- Weight 45 Pounds

\$499⁹⁹

#WFSS10-DEEP



#WFSS10-D-FOOT
Foot Operated
Stand

\$249⁹⁹

#WFSS101-2



\$199⁹⁹

SHRINKER/STRETCHER SET

- Our Entry Level Kit Includes 2 Cast Iron Bodies, 2 Handles with Shrinking and Stretching Jaws
- 18 Gauge Capacity Mild Steel or 1/16" Aluminum

SHRINKER/STRETCHER

"SUPER DUTY"

- Heavy Reinforced Cast Iron Frame
- 3" Throat Depth
- Works up to 18 Gauge Mild Steel
- Both Shrinker and Stretcher Jaws Included
- Ideal for Forming Complex Shapes Such as Windshield Channels, Wheel Openings, Patch Repair panels
- Easy to Operate, Instructions Included



#WFSS-SD

\$329⁹⁹

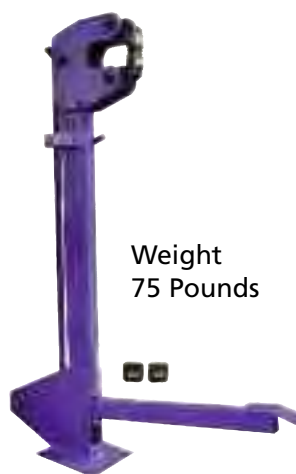
SHRINKER/STRETCHER

- Heavy Reinforced Cast Iron Frame
- 9" Throat Depth
- Works up to 18 Gauge Mild Steel
- Includes Foot Operated Stand with Adjustable Pressure
- 18 Gauge Mild Steel Capacity or 16 Gauge Aluminum



\$1195⁹⁹

#WFSSCAST9



Weight
75 Pounds

HEAVY DUTY SHRINKER/STRETCHER

- Works up to 18 Gauge Mild Steel and 16 Gauge Aluminum
- Foot Operated
- 4 3/4" Throat Depth

\$989⁹⁹

#WFSSHD

SHRINKER-STRETCHER

- Ideal for Creating Repair Panels for Wheel Openings, Windshields, etc.
- Produce Curves as Tight as 3" Radius
- Works Mild Steel up to 18 ga and Aluminum up to 16 ga
- Drilled Bottom for Bench Mounting or Clamp in a Bench Vise
- 1 Year Warranty



#WFSS10

- Cast Iron Frame
- Includes 2 Jaw Set Change Jaw in Seconds

\$196⁹⁹



#WFSS10 STAND
Adjustable Height

\$129⁹⁹



#WFSS10 FOOT
Foot Operated
Shrinker/Stretching Stand

\$239⁹⁹

#WFSS10DBL PLATE
Plate Allows Use of 2 Bodies on Stand

\$59⁹⁹

TOP SELLER!

PORTABLE SHRINKER/STRETCHER



#WFSS10P

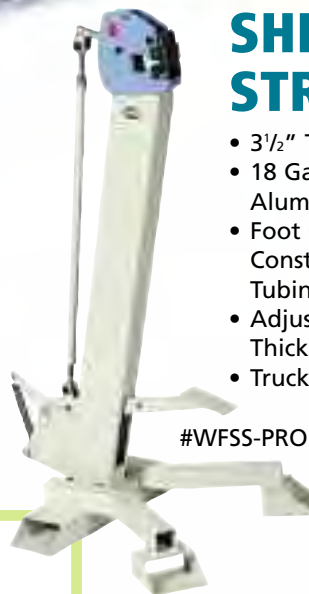
- Lightweight Aluminum Frame
- Works up to 18 gauge Mild Steel and 1/16" Aluminum
- Includes Both Shrinking and Stretching Jaws

- Weight 6 Lbs.
- Length 22"

\$549⁹⁹

SHRINKER STRETCHER

- 3 1/2" Throat
- 18 Gauge Mild Steel or 16 Gauge Aluminum
- Foot Operated Floor Stand Constructed from 2 1/2" x 5" Wall Tubing
- Adjustable Tensioner for Various Thickness Work Pieces
- Truck Freight Weight - 95 Pounds



#WFSS-PRO

\$695⁰⁰

SHRINKER STRETCHER SET WITH FOOT OPERATED STAND

- Includes both Shrinker and Stretcher Units
- Heavy Duty Floor Stand with Adjustable Pressure Rods and Spring Foot Pedal Return
- Works Mild Steel up to 18 Gauge and Aluminum up to 1/16".

\$495⁰⁰

#WFSSDF



#WFSS-PRO

We Know What We Sell! Call Us!

Billy Lane Master Fabricator and Motorcycle Creator



PLANISHING HAMMER

- 26" Throat Depth
- Works up to 1/16" Mild Steel or 1/8" Aluminum
- Industrial Air Hammer at 4600 Hits Per Minute
- Quick Adjust Anvil Height
- Includes Floor Stand with Handy Retractable Wheels, In-Line Oiler, Pressure Regulator and Foot Control
- 110V Electric
- Uses Shop Air 50-100 Pounds

\$1599⁰⁰



- Height 63"
- Weight 175 lbs.

#WFPH26-T



SUPER WHEEL

- Industrial 45" Throat Depth
- 8" Top Wheel for Easy Rolling
- Foot Operated Tensioner
- 8 Piece Precision Anvil Set with Ball Bearings
- 63" Overall Height
- Weight 725 Pounds

\$4495⁰⁰

#WFEW-45-SUPER



Shipping weight
300 pounds



#WFEW

ENGLISH WHEEL

- 37³/₄" Throat Depth
- Extra Deep Throat
- Works up to 1/16" (16ga.) Mild Steel
- Wheels can be Turned 90 Degrees
- Cam Operated Quick Release on Lower Wheel
- Hardened and Polished Wheels
- 6" Top Wheel
- Includes a Complete Set of 6 Wheels

\$1195⁰⁰



*Specially made for Woodward-Fab
with heavier frame!*

PLANISHING HAMMER

- A Well Constructed Machine
- Throat Depth 19⁵/₈"
- Uses Shop Air 50-100 PSI, 4 CFM
- Features Quick Adjust Anvil Height/Pressure
- Includes Floor Stand, 3 Anvils (1", 2", 3" Radius), Air Motor, Foot Pedal

\$295⁹⁹

#WFPL2



Woodward Fab Metal Working Equipment

ENGLISH WHEEL ROLL, BEAD AND FORM

- 43" Throat Depth
- 6" x 3" Top Wheel for Easy Rolling
- Cam Operated Quick Release Lower Anvil
- Hardened & Polished Wheels
- Smooth Ball Bearing Spindles
- Wheels can be Adjusted to 90 Degrees
- Foot Operated Height Adjustment
- Constructed from Heavy 5" Box Tubing
- Includes 4 Top Wheels and 10 Lower Anvils
- Height 63½"
- Weight 510 Pounds

\$2495⁰⁰



#WFEW45T



#WFEW44

MONSTER WHEEL

- A Whopping 44" of Throat Depth
- 7" Top Wheel
- Super Wide 3" Anvils
- Quick Release Lower Anvil
- Foot Operated Height Adjustment
- Smooth as Silk Ball Bearing Spindles
- 72" Overall Height
- Includes 4 Radius Anvils and 1 Flat Anvil
- Weight 400 Pounds

\$1995⁰⁰



#WFEW2

BEST SELLER!

ENGLISH WHEEL

- Throat Depth 28"
- Heavy Duty Construction
- 8" Top Wheel
- Quick Release Lower Anvil
- Features Precision Ball Bearings
- Includes Floor Stand, 5 Pieces Radius Anvils (2⅞", 3", 5", 8½", 12") and One Flat Wheel
- Height 60", Weight 190 Pounds

\$699⁹⁹

#WFEW2



PROFESSIONAL ENGLISH WHEEL FORMING CENTER

- Throat Depth 33"
- Large 8" Top Wheel for Easy Rolling
- 8-Piece Anvil Set
- 3½" Throat Shrinker/Stretcher
- 12" Leather Shot Bag on it's Own Work Station
- 6" Metal Doming Head in Removable Station
- 3½" Urethane Locking Casters
- Weight 580 Pounds

\$4295⁰⁰

#WFEW-CENTER

**Great Buys
for Tool Guys!**



ENGLISH WHEEL

- Rock Solid Cast Iron Frame
- Throat Depth 24"
- Large 7¾" x 2¾" Top Wheel
- Foot Operated Tensioner and Hand Wheel
- 6 Piece Hardened and Polished Anvil Package
- Floor Stand with Anvil Storage and Floor Levelers

\$1795⁰⁰

#WFEWC24



**AMERICA'S
TOP SELLER**



BEAD ROLLER #WFBR6

- Easy to Operate
- Includes 6 Sets of Dies;
1/4", 3/8" and 1/2" beading dies, 1/16", 1/8"
and 1/4" step dies
- Clamps in a Bench Vise
- 18" Deep Throat
- 18 Gauge Capacity

\$169⁹⁹



#WFBR6 STAND
\$129⁹⁹



#WFBR6 FENCE
Adjustable Guide Fence
\$69⁹⁹



#WFBR6-POWER

- 110 V Power Conversion
- Forward/Reverse
- Variable Speed
- Foot Control Operated

\$589⁹⁹



- Super Heavy Duty
- Solid Cast Iron Non-Flex Frame
- 20" Throat Depth
- 1" Diameter Spindles
- Works up to 18 Gauge Mild Steel Like Butter or 1/16" Aluminum
- 43" Tall

**OUR STRONGEST
MANUAL MACHINE**

BEAD ROLLING MACHINE

Includes Floor Stand and 6 Sets of Dies:

- 1/4" Round Bead Die
- 1/2" Round Bead Die
- 1/16" Step Die
- 1/8" Step Die
- 1/4" Step Die
- 1 Set of Shearing Dies

\$699⁹⁹

#WFBR20

Optional Dies fit #WFBR6 and #WFBR20

#BR6 HEM	3/8" deep x 90 degree	\$47.00
#BR6 45	45 degree	\$47.00
#BR6 SPOILER	13/16" Radius Spoiler Roll	\$47.00
#BR6 TANK	15/32" Radius Tank Roll	\$47.00
#BR6 ART	Art Roll	\$47.00
#BR6 TIP	Tipping Die	\$47.00
#BR6 HEM Set	3 Piece Hemming Set Includes 90 degree, 120 degree and Flat Dies	\$139.00
#BR6 TUBE	Tube Beading Die for 1/2" Tube I.D. and Larger	\$62.00

**We Know What We Sell!
Call Us For More
Information!**

**Our Largest "MONSTER 43"
Throat Depth**

POWER BEAD ROLLER

- 43" Throat Depth
- 110 Volt
- Forward/Reverse
- Variable Speed Foot Control
- 1/2" Round Bead Die
- Includes Floor Stand, Die Rack

\$1895⁰⁰

#WFBR43P



POWER BEAD ROLLER

- 24" Throat Depth
- 110 Volt Electric
- Forward/Reverse
- Variable Speed Foot Control
- 1/2" Round Bead Die
- Floor Stand, Die Rack

\$995⁰⁰

#WFBR24P



*See Pages 30 and 31
for Bead Roller Dies
and Accessories*



POWER BEAD ROLLER

- 36" Throat Depth
- 110 Volt Electric
- Forward/Reverse
- Variable Speed Foot Control
- 1/2" Round Bead Die
- Floor Stand, Die Rack

\$1295⁰⁰

#WFBR36P

MANUAL BEAD ROLLER

- 24" Throat Depth
- Manual Operation
- 18 Gauge Mild Steel Capacity or 1/16" Aluminum
- 1/2" Round Bead Die
- Floor Stand, Die Rack

\$595⁰⁰

#WFBR24M

Dies and Accessories fit Models WFBR24M, WFBR24P, WFBR36P, WFBR43P Bead Rollers



BR45N \$45.00

45 Degree Nylon

BR45S \$45.00

45 Degree Steel



BRSPoilN \$45.00

1 1/4" Spoiler Roll Nylon

BRSPoilS \$45.00

1 1/4" Spoiler Roll Steel



BRTD \$55.00

Tipping Die



BRHEM140 \$90.00

140 Degree Hem Die



BRHEM90 \$70.00

90 Degree Hem Die



BRHEMFLAT \$45.00

Flat Hem Die



BRTUBE-40

\$159.00

1" Tube Roll Die



BRRB1N 1" Round Bead Die Nylon \$55.00

BRRB1S 1" Round Bead Die Steel \$55.00

BRRB3/4N 3/4" Round Bead Die Nylon \$55.00

BRRB3/4S 3/4" Round Bead Die Steel \$55.00

BRRB5/8N 5/8" Round Bead Die Nylon \$45.00

BRRB5/8S 5/8" Round Bead Die Steel \$45.00

BRBR1/2N 1/2" Round Bead Die Nylon \$45.00

BRRB1/2S 1/2" Round Bead Die Steel \$45.00

BRRB3/8N 3/8" Round Bead Die Nylon \$45.00

BRRB3/8S 3/8" Round Bead Die Steel \$45.00

BRRB5/16N 5/16" Round Bead Die Nylon \$45.00

BRRB5/16S 5/16" Round Bead Die Steel \$45.00

BRRB1/4N 1/4" Round Bead Die Nylon \$45.00

BRRB1/4S 1/4" Round Bead Die Steel \$45.00

BRRB3/16N 3/16" Round Bead Die Nylon \$45.00

BRRB3/16S 3/16" Round Bead Die Steel \$45.00

BRRB1/8N 1/8" Round Bead Die Nylon \$45.00

BRRB1/8S 1/8" Round Bead Die Steel \$45.00

BEAD ROLLER DIES



BRSD1/4N 1/4" Step Die Nylon \$45.00

BRSD1/4S 1/4" Step Die Steel \$45.00

BRSD3/16N 3/16" Step Die Nylon \$45.00

BRSD3/16S 3/16" Step Die Steel \$45.00

BRSD1/8N 1/8" Step Die Nylon \$45.00

BRSD1/8S 1/8" Step Die Steel \$45.00

BRSD9N .90" Step Die Nylon \$45.00

BRSD9S .90" Step Die Steel \$45.00

BRSD1/16N 1/16" Step Die Nylon \$45.00

BRSD1/16S 1/16" Step Die Steel \$45.00

**Dies and Accessories fit Models WFBR24M,
WFBR24P, WFBR36P, WFBR43P Bead Rollers**



BRFB1N 1" Flat Bead Die Nylon	\$45.00
BRFB1S 1" Flat Bead Die Steel	\$45.00
BRFB3/4N 3/4" Flat Bead Die Nylon	\$45.00
BRFB3/4S 3/4" Flat Bead Die Steel	\$45.00
BRFB1/2N 1/2" Flat Bead Die Nylon	\$45.00
BRFN1/2S 1/2" Flat Bead Die Steel	\$45.00
BRFB3/8N 3/8" Flat Bead Die Nylon	\$45.00
BRFB3/8S 3/8" Flat Bead Die Steel	\$45.00
BRFB1/4N 1/4" Flat Bead Die Nylon	\$45.00
BRFB1/4S 1/4" Flat Bead Die Steel	\$45.00
BRFB3/16N 3/16" Flat Bead Die Nylon	\$45.00
BRFB3/16S 3/16" Flat Bead Die Steel	\$45.00
BRFB1/8N 1/8" Flat Bead Die Nylon	\$45.00
BRFB1/8S 1/8" Flat Bead Die Steel	\$45.00

WORK TABLE

#BRTABLE

- For Added Work Support
- 16" x 27 1/2"

\$229⁹⁹



WORK FENCE

#BRFENCE **\$89⁹⁹**



**BEAD
ROLLER**

- Work up to 1/16" Mild Steel
- 12" Throat Depth
- Adjustable Fence
- Massive 1 1/2" Diameter Spindles
- Forward-Reverse Foot Pedal
- 220 Volt Single Phase
- Includes 1/2" Bead Die, 1/2" 45 Degree Die, Shearing Die
- Weight 1300 Pounds



\$2599⁹⁹

#WFBR218

SUPER PRECISION HIGH QUALITY

**ROTARY
FORMER**

- 7" Deep Throat
- Cast Iron Frame
- Adjustable Stops
- 18 - 20 Gauge Capacity
- Hardened and Ground Shafts
- Gear Drive
- 6 Sets of Dies; 1/8" and 3/16" beading, 1/4" Ogee (double beading), 90 degree step, 45 degree step and crimping die (duct work)



\$349⁹⁹

#SPRF ROTARY FORMER KIT



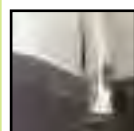
#WF14006	HOLE CUTTER KIT 7/8", 1 1/8", 1 3/8", 1 3/4", 2", 2 1/2" Cutters Arbor, Hex Washer and Extra Pilot	\$181⁷⁰
#WF13218	HOLE CUTTER KIT 1/4", 5/16", 3/8", 7/16", 1/2", 9/16" & 5/8" Cutters - Arbor and (3) Extra Pilots	\$61³⁰
#WF11082	SPOT WELD CUTTER (3) 3/8" Cutters, Arbor, (2) Extra Pilots	\$46³⁵

★USA★

BLAIR CUTTERS

If the hole is critical and a hardware store hole saw won't do - this is **THE CUTTER!**

Makes holes faster and with superior quality. These cutters have a heavier wall for extreme durability. Two step geometry that cuts faster and clears chips easier.

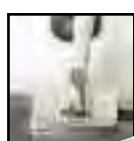


#Flange-6

HAND FLANGER

- Make a Perfect Over-lap Weld Joint in Seconds
- No Need to Remove the Panel from the Car
- The 5/8" Wide Jaw Will Work on Straight Edges and Contours

\$27⁹⁵



#Flange-25

WIDE JAW FLANGER

- 2 1/2" Wide Jaw Makes Short Work of Flanging Long Straight Edges

\$38⁹⁵

#WFSPT



SPOT WELD CUTTER SET

- Includes 5/16" and 3/8" Double Sided Cutters and Arbor

\$36⁹⁹



#WFPK15

PUNCH KIT

- Punch Hole up to 1/16" Thick Mild Steel
- 2" Throat Depth
- Kit Includes 3/32", 1/8", 5/32", 3/16", 7/32", 1/4" and 9/32" Diameter Punches
- Also Includes Storage Case

\$49⁹⁹

#WFPK15

INSTRUCTION BOOKS, VIDEOS AND DVDS

DVD - TIG WELDING BASICS

80 minutes. Ron Covell describes the complete welding process.

#DVD21 **\$38⁰⁰**

DVD - MIG WELDING MADE EASY

70 minutes. Ron Covell step by step clear instructions from a master.

#DVD22 **\$38⁰⁰**

METAL FABRICATOR'S HANDBOOK

Fournier, Basic tool selection and use, MIG, TIG, Arc and gas welding, fuel and oil tanks, exhaust headers, roll bars and roll cages. Basic metal shaping. 175 pages step-by-step photos.

#WFMFB00 **\$23⁹⁵**

DVD - BODY PANEL REPLACEMENT

152 minutes. Kevin Tetz. Covers vintage to late model partial and full panels, welding, adhesives, rust issues and finishing.

#DVDKT1 **\$40⁰⁰**

DVD - METAL PREP/RUST REPAIR

55 minutes. Kevin Tetz. Covers stripping, light body work, dent repair, patches and rust prevention.

#DVDK22 **\$38⁰⁰**

SHEET METAL HANDBOOK

Fournier, Tips on setting up your own shop, proper use of the English wheel, basic metal techniques, hammer forming, riveting and smoothing aluminum using shot bags, mallets & slappers. Final smoothing on English Wheel.

#WFSMF00 **\$23⁹⁵**

WELDER'S HANDBOOK

Richard Finch, Weld like a pro! Covers Mig, Tig, Plasma-arc and Oxyacetylene welding. Also covers jigs and fixtures. 160 pages with many illustrations and clear photos.

#WFWHB00 **\$19⁹⁵**

DVD - PAINT YOUR OWN CAR

110 minutes. Kevin Tetz. Kevin coaches you through the complete process, all in a home garage. #DVDKT3

\$38⁰⁰

DVD - BODY SHOP BASICS

90 minutes. Kevin Tetz. Covers equipment, repairs, paint techniques, and trouble shooting. #DVDKT4

\$38⁰⁰

DVD-COLOR SANDING & BUFFING

60 minutes. Kevin Tetz. Instructions for after the new paint job, color sanding, buffing, eliminate runs & defects. #DVDKT5

\$38⁰⁰

VIDEO - METAL WORK BASICS

Hand tools. A comprehensive introduction to metal work by master Ron Fournier. Hammers, dollies, shot bags, measuring tools, glass pliers, aviation snips, tinner's snips and hand seamers. 90 minutes.

#WFHTV00 **\$35⁰⁰**

VIDEO - BASIC TECHNIQUES for working with steel

By Ron Covell. Ron demonstrates basic hammer and dolly techniques and shows how to do high level metal work. Rust repair, hole filling, patch panels, etc. 100 minutes..

#WFBTS00 **\$40⁰⁰**

MARTIN TOOLS THE KEY TO METAL BUMPING HANDBOOK

Excellent instruction manual and guide for everybody, man or student. 126 pages covering approaches to body repair.

#WF-BFB **\$16⁶⁵**

VIDEO METAL WORKING BASICS

Large equipment instruction by Ron Fournier. Sheet metal brakes, sheet metal, band saws, sanders, drill press and rotary machines. 90 minutes.

#WFLED00 **\$35⁰⁰**

VIDEO SHEET METAL SHAPING

Blocking & smoothing techniques by Ron Fournier. Techniques of blocking and smoothing aluminum using shot bags, mallets & slappers. Wheel.

#WFBVS00 **\$35⁰⁰**

VIDEO BUCKS, PATTERNS AND FORMS

By Ron Fournier. Demonstrates building a fender buck. Topics include: material, fastening, stations. 60 minutes.

#WFBPV00 **\$30⁰⁰**

VIDEO ENGLISH WHEEL TECHNIQUES

Ron Covell. From large cast iron to c-clamp machines. Basic tracking patterns used to shape panels of various sizes & configurations. For beginners as well as experienced users.

#WFEWT00 **\$40⁰⁰**

DVD - MAKING MOTORCYCLE GAS TANKS

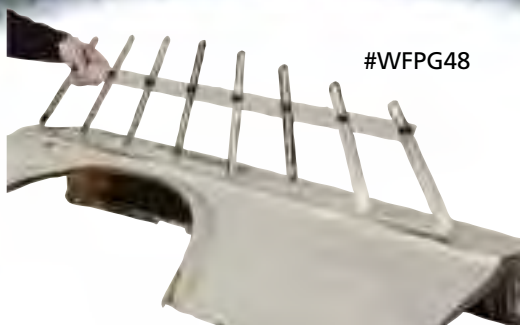
Ron Covell shows the "intimate details" of making two different gas tanks. A flat bottom steel chopper tank and a curved aluminum tank. 180 minutes.

#WFMGZ00 **\$60⁰⁰**

DVD MOTORCYCLE FABRICATION

From sheet to street. Ron Fournier creates custom motorcycle sheet metal parts from scratch. Step-by-step aluminum tank, fender, sides & seat pan. "Tricks of the Trade".

#WFMFM01 **\$60⁰⁰**



#WFPG48

PANEL GAUGE

- Weighs Only 6 Pounds, 48" Long
- Chrome Plated
- Easy to Adjust with Thumb Screws
- Use for Large Panel Replacements and Repairs

\$89⁹⁵



#WFC03

3" AIR CUT-OFF TOOL

- Cut Through Bolts or Sheet Metal in Seconds
- Fast 18,000 RPM
- Lightweight
- Requires 4 CFM or 1 1/2 HP Compressor

\$21⁹⁹



#WFG01

\$39⁹⁹

MICRO GRINDER KIT

- Great for Deburring and Polishing in Tight Areas
- Ideal for Porting & Polishing
- Ultra Slim Design
- 1/8" Collet
- Rear Exhaust
- Variable Speed up to 54,000 RPM
- Includes 10 Wheels and Fitted Case

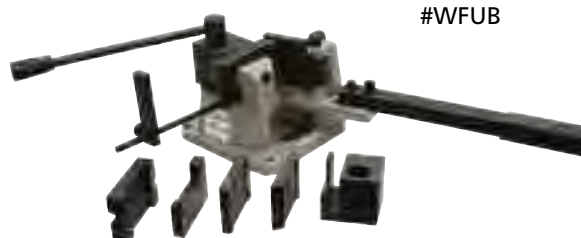


#WFS71

AIR SAW

- 10,000 Strokes per Minute
- Adjustable Blade Guard
- Rear Exhaust

\$74⁹⁹



#WFUB

BRACKET MAKER

- Forms Flats up to 2 3/4" x 1/4"
- Forms Rounds up to 3/8"
- Includes 90° Tools and Radius Tools
- Degree Ring with Stops
- Length Stop
- Weight 70 Pounds

\$246⁹⁹

BARREL MALLETS

#WFBA15005	2 1/2" FACE 19-OZ.	\$16⁵⁰
#WFBA15006	2 3/4" FACE 14-OZ.	\$19⁵⁰
#WFBA15007	3" FACE 30-OZ.	\$22⁵⁰

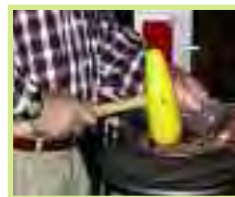
BOSSING MALLETS

#WFFBM01	2" DIA. FACE 12-OZ..	\$44⁰⁰
#WFFBM02	2 3/4" DIA. FACE 23-OZ ...	\$46⁰⁰
#WFFBM03	3" DIA. FACE 26-OZ ...	\$49⁰⁰



Made of non-marring plastic for a long life. With hickory handles.

BIG YELLOW PLASTIC BARREL MALLETS



A "must have" for metal working projects. Use with one of our leather shot bags. Extended reach heads. Made in U.S.A.

PLASTIC BOSSING MALLETS



FINGER DOLLY

For small areas and trim work. 11-oz.

\$12⁹⁵

#DOLLY FINGER

5-PC. DOLLY SET

- Hardened and Ground
- Set Includes Sizes 1/2" to 1 3/16"

\$139⁹⁹

#WF-DOLLY



HAMMER DOLLY KIT

- Includes Three 12-Oz. Hammers and Three Dollies
- 10" Fiberglass Handles with Cushioned Grips
- Plastic Storage Case

\$69⁹⁹

#WFHAMMERD



HARDWOOD SLAPPERS

Made in the USA from Hard Maple Trees

- Leather Face to Prevent Marring Work Pieces
- 14" Overall Length 2 1/4" Wide Face



#WFSLP1 Gentle Curve...	\$47⁹⁵
#WFSLP2 Medium Curve...	\$47⁹⁵
#WFSLP3 Flat	\$47⁹⁵

CURVED T-DOLLIES

#WFDOLLYC1
1" x 8"

\$24.99



#WFDOLLYC.75
3/4" x 6"

\$21.99

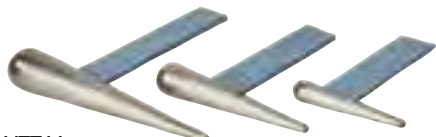
#WFDOLLYC.5
1/2" x 6"

\$18.99

TAPERED T-DOLLIES

#WFDOLLYTT11
2" x 12"

\$37.99

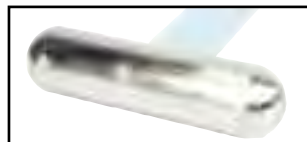


#WFDOLLYT8
1.5" x 8"

\$29.99

#WFDOLLYT5.7
1" x 5.7"

\$24.99



T-DOLLIES HARDENED AND POLISHED STEEL

#DOLLY .5	1/2" x 2 3/4"	\$18⁰⁰
#DOLLY .625	5/8" x 3"	\$21⁰⁰
#DOLLY .78	7/8" x 3 3/4"	\$24⁰⁰
#DOLLY 1.0	1" x 4 1/4"	\$27⁰⁰
#DOLLY 1.18	1 3/16" x 5 1/2"	\$30⁰⁰
#DOLLY 1.5	1 1/2" x 7"	\$45⁰⁰
#DOLLY 2.	2" x 8"	\$55⁰⁰



CLECO CLAMP KIT

\$37⁹⁵

#CLEC-1

- Use for Holding Sheet Metal Panels, Patches in Place for Fit-Up and Welding
- 17 Piece Kit Includes: Pliers, 12 - 1/8" Reusable Cleco Fasteners, 2 - Side Grip Fasteners, 2 - Knurled Fasteners, Plastic Carry Case

PUNCH AND FLANGER COMBO

- Flange up to 20 Gauge and Punch up to 18 Gauge Sheet Metal
- 11" Length
- Spring Return Handle
- 3/16" Diameter Punch



#WFPP

\$76⁹⁹



- Bends 3/16", 1/4", 5/16" and 3/8" All in One Easy to Use Tool
- 12" Length

#WF4-1BEND

TUBE BENDER

- Makes Easy, Kink Free Bends for Brake Lines, Transmission Lines, etc.

\$34⁹⁹

HYDRAULIC REBAR CUTTER

- Cuts Rebar Steel or Braided Cable from 3/16" to 7/8" Diameter
- Just Pump the Handle! Almost Effortless Cutting
- Includes Plastic Storage Case
- 13" Length, Weighs Only 9 1/2 lbs.



\$99⁹⁹

#R22

BRAKE BLEEDER

\$139⁹⁹

#WFBLEED

- Easy to Use Air Operated
- No Bubbles
- No Brake Pumping
- No Slow Hand Pumps
- No Reverse Push Type Systems That Put Old Junky Fluid into the Master Cylinder
- Collects All Brake Fluid Without a Mess
- 2 Quart Capacity Cup, Includes Instructions



PAINT SHAKER

- Air Operated, Holds 1 Gal. Cans
- Heavy Duty Steel
- Easy to Clean Chrome Frame
- Mix a Gallon of Paint in Under 2 Min.

#WFPAINTSK1

\$189⁹⁵

HOG RING PLIER KIT

- High Quality, Long Reach Kit
- 6 3/4" Length Plier
- Comfort Grip
- Spring Closure Assist Holds Rings in Place



INCLUDES RING PKG. AND STORAGE CASE

#WFHOG-KIT

\$39⁹⁵



HOG RING 2-PC. PLIER SET

- A Must Have Tool for Installing New Seat Covers
- Includes: 7" Straight Plier, 7" 45 Degree Plier, 50 Pieces 3/4" Hog Rings

#WFHOG-R 100 PC.
3/4" Hog Rings \$3.99

\$32⁹⁵

#WFHOG



9 1/2" Length

PLUG-SPOT WELD PLIERS

- Secures 2 Pieces of Sheet Metal Together for Welding
- Copper Plated Swivel Pad to Stop Weld Spatter

\$33⁹⁹

#WFPLUG

PANEL PAINT STAND 40" Width

#WFPS40



- Cushioned Top Rail to Protect Panels
- Adjustable Width
- Curled Feet, Can be Used on Gravel, Grass, Uneven Floors
- Made with 1" Aluminum Tubing
- Folds for Easy Storage

\$46⁹⁹

PALMGREN DEBURRING CHAMFERING

Palmgren's line-up of edge finishing machines effectively deburr, chamfer and bevels edges on flat and square metal and plastics.

- Makes Short Work Deburring Projects. The "Go-To" Machine for Edge Finishing
- Bevel Angle 45 Degrees
- Minimum Material Thickness 1/8"
- Maximum Bevel Depth up to 1/8"
- 3/4 Horsepower, 110 Volt

\$775⁰⁰

#82300

Great Buys for Tool Guys!



#82304

- This Tool Utilizes a Standard Cup Style Grinding Wheel for Deburring-Chamfering the Edges of any Ferrous Material Including Heat Hardened Edges. Completed Parts Appear to Have Been Precision Finished on a Surface Grinder.
- Bevel Angle 45 Degrees
- Minimum Material Thickness 1/8"
- Maximum Bevel Depth up to 1/8"
- 1/3 Horsepower, 110 Volt

\$546⁰⁰

#S-180P



Heck
PRODUCTS, INC.

**MINI SHAPE
BEVELER**

- Ideal for Chamfering Contoured Edges, Slots and "Burn" Out Holes
- Uses Carbide Inserts to Create Bevels up to 3/16" Deep
- Uses Shop Air

\$985⁰⁰



NIBBLER-PULMAX

- From 1/8" to 1/4" Capacity Machines
- Up to 43" Throat Dept
- Nibble, Shear, Louver, Bead, Flange Dome and More All on One Machine

STARTING AT

\$17500⁰⁰

*The One Machine Metal Shop!
This is the machine the original prototype
Thunderbird was made with!*

Call For Complete Information

DIMPLE DIES ★USA★

New 3-Way Punch & Flare Tools

- Can be Used to Punch Holes, Punch and Flare at the Same Time or Flare Existing Holes
- Precision Ground Hardened Cutting Edges
- Punch up to 16 Gauge (1/16") Mild Steel or 14 Gauge Aluminum
- Requires 1/2" Pilot Hole
- Draw Bar Bolt Included

#PF4A	1"	\$89.95
#PF4B	1 1/4"	\$89.95
#PF4C	1 1/2"	\$99.95
#PF4D	1 3/4"	\$99.95
#PF4E	2"	\$109.95
#PF4F	2 1/2"	\$109.95
#PF4G	2 5/8"	\$121.95
#PF4H	3"	\$137.95

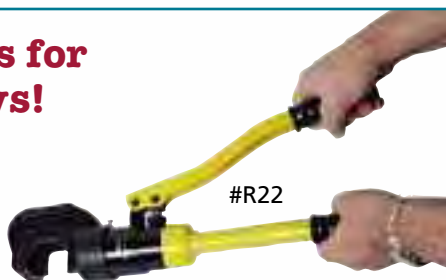


Use for stiffening and Reducing panel weight.

Great Buys for Tool Guys!

HYDRAULIC REBAR CUTTER

- Just Pump the Handle
- Cuts Rebar or Braided Wire from 3/16" to 7/8"
- 13" Length and Only 9 1/2 Pounds



\$149⁹⁹



*"Stop Beating Parts with a Hammer in a Vise!"
Makes Professional Bends*

FORM BENDER

- Easy Bending Brake
- 4" Die Width
- 3/16" Capacity

\$139⁹⁹

HYDRAULIC CABLE CUTTER

- Cuts Copper/ Aluminum Electric Cable with Ease
- Features 2-Stage 6 3/4 Ton Hydraulic Pump
- Automatic and Manual Pressure Release



Includes metal Storage Case

#RCC45 1 3/4" Capacity - 22" - 7 1/2 lbs. **\$595⁹⁹**

#RCC85 3 3/8" Capacity - 26" - 18 lbs. **\$895⁹⁹**



RING ROLLER FLAT BAR

- Maximum Material 3/16" x 1" Flat Steel
- 1/4" Round Bar
- Easy to Operate
- Minimum Ring Diameter 1 1/2"

\$129⁹⁹

TURBO-BURR®

- Fast One Pass Safety Edging of Sheet Metal Parts at 10 Feet per Minute
- No More Scraping Sharp Edges
- Uses Standard 1/4" Shank Carbide Burr to Produce Consistent Chamfers
- Spindle Speed 55,000 rpm
- Air Requirement: 4-6 CFM @80-110 Pounds Pressure (1hp Compressor)
- Maximum Depth of Cut 1/16"
- Includes Cutter, Wrenches and Instructions



★USA★

#S TURBO
\$479⁰⁰

PORTABLE BAND SAW

- Variable Speed
- Adjustable Angle from 0 to 45 Degrees
- At 90° Cut up to 3^{3/8}" Rounds and 3^{3/8}" x 4^{1/8}" Rectangles
- At 45° Cut up to 2^{3/4}" Rounds and 2^{1/2}" x 3" Rectangles
- Blade Size 1/2" x 53"
- Weighs Only 40 Pounds
- 110 Volt, 1000 Watt

\$439⁹⁹

#WFB5275



MITER BAND SAW

- Miter Cutting Band Saw
- Head Swivels up to 60 Degrees
- Fast and Simple Set-Up
- No need to swing the material in the shop or mess around with trying to swivel a vise
- Quick Approach Vise
- Hydraulic Fine Feed Adjustable Head Down Pressure
- Speeds 78 / 117 / 198
- Ball Bearing Blade Guides
- Adjustable Work Stop
- Wheels to make moving around the shop easy
- Uses 1/2" x .025 x 64^{1/2}" Blade
- 1/2 Horsepower 110 Volt • Shipping Weight 350
- Cuts
 - 90 5" Rounds - 4"x6" Rectangles
 - 45 3^{3/4}" Rounds - 2^{3/4}"x3^{3/4}" Rectangles
 - 60 1^{3/4}" Rounds - 1^{3/4}"x2^{1/8}" Rectangles

\$749⁹⁹

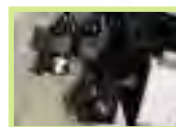


#WFS56

BAND SAW

- Miter Cutting Band Saw
- Head Swivels up to 45 Degrees
- Quick Approach Vise with Cam Lock
- Ball Bearing Blade Guides
- Thru Guide Coolant
- 4 Gallon Coolant Reservoir
- Hydraulic Fine Feed Adjustable Head Down Pressure
- Chip Brush to keep blade clean
- Adjustable Work Stop
- 1 Horsepower 110 Volt
- Speeds 86 / 132 / 178 / 260
- Uses 3/4" x .030 x 93" Blade
- Shipping Weight 550 lbs.
- Wheels to make moving around the shop easy
- Cuts
 - 90 7" Rounds - 7" x 12" Rectangles
 - 45 5" Rounds -
 - 4^{3/4}" x 4^{3/4}" Rectangles

\$1599⁰⁰



#WFS712



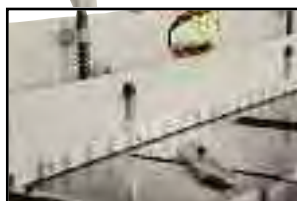
#WFFS16

FOOT SHEAR 52" Blade Length

- 16 Gauge Maximum Capacity
- Cast Iron Frame
- Front Arm Supports
- High Carbon Blade
- Quality Construction
- Adjustable Blade Gap
- Front Squaring Arm with Scale
- Back Gauge with Inch and Metric Scale
- Weight 1350 lbs. Compare!

\$2195⁹⁹

#WFFS16



Dennis Gage
My Classic Car Tv

SHEET METAL THICKNESS CONVERSION CHART

24 ga	.023
22 ga	.0286
1/32	.032
20 ga	.0348
18 ga	.0475
16 ga 1/16	.0625
14 ga	.080
3/32	.0937
12 ga	.1053
1/8	.125
10 ga	.135
5/32	.1562
8 ga	.162
3/16	.1875
7/32	.2187
1/4	.250

WOODWARD FAB

PIPE CONVERSION CHART SCHEDULE 40 PIPE

Diameter	Wall Thickness
3/8"	.091"
1/2"	.109"
3/4"	.113"
1"	.133"
1 1/4"	.140"
1 1/2"	.145"
2"	.154"

MITER CUT BAND SAW

- Head Pivot to 45°
- 2 Speeds, 130, 260 FPM
- Blade Size 7/8" x 3/4" x 82"
- 1 1/2 Horsepower 110 Volt
- Cuts Rounds up to 6 3/4"
- Rectangles up to 6 3/4" x 8 1/4"



\$2495⁰⁰

#WFBS-6.7

Cut Steel and Aluminum Fast and Almost Completely Burr-Free

#WFCS 250



#WFCS 315



#WFCS 350

COLD SAWS

The First Choice for Cutting Tubing or Structural Steels

- Enclosed Cast Iron Reduction Gear Boxes
- Build-in Coolant Systems for Improved Finishes
- Capable of Mitering Left or Right
- Adjustable Hardened Vise Jaws
- Fully Guarded Blade
- Convenient Trigger On/Off Switch
- Enclosed Metal Floor Stand
- Extra Heavy Pivot to Prevent Vibration
- 220 Volt Single Phase Electric, 36 RPM

\$1795⁰⁰

#WFCS 250 10" BLADE

Material	90 degrees (Straight)	45 degrees
Round tube	3"	2"
Square tube	2 1/2"	2"
Rectangle Tube	3" x 3"	2" x 2"
Solid	1.5"	1"

\$2295⁰⁰

#WFCS 315 12 1/2" BLADE

Material	90 degrees (Straight)	45 degrees
Round tube	3 5/8"	3 5/8"
Square tube	3 1/4"	3 1/8"
Rectangle Tube	4 1/4" x 2 3/4"	3 1/4" x 2 3/4"
Solid	2"	1 3/4"

\$3195⁰⁰

#WFCS 350 14" BLADE

Material	90 degrees (Straight)	45 degrees
Round tube	4 1/2"	4"
Square tube	4 1/4" - 4 1/4"	4" - 4"
Rectangle Tube	5 1/2" x 4"	4" x 4"
Solid	2"	1 3/4"

Models WFCS 315 and WFCS 350

- Self Centering Device for Cleaner Cuts
- Clamp On Both Sides of the Workpiece to Eliminate Burrs
- Miters up to 180 Degrees - You Can Even Slot!





New!

Best Cutting Fluid on the Planet!



CRAZY LARRY'S SECRET LUBE®

BRUSH ON OR SPRAY

*Cures Poor Tool Life! Improves Finishes!
Safe Vegetable Oil Base*

USE FOR:

- Tapping • Drilling
- Milling • Reaming
- Broaching
- Beveling

#PS4	
4-oz. Pump Spray.....	\$6.95
#PS8	
8-oz. Pump Spray.....	\$9.25
#LUBEG	
Gallon	\$99.40



*Automotive Mentoring Group
(Chicago)*



CAST IRON DRILL PRESS VISE

- Industrial Frame, Hardened Jaws
- Jaw Opening 4³/₄", Jaw Width 5", Jaw Height 1"
- Weight 23 lbs.

\$99⁹⁹

#WFFV5



#DP10



#DP10 Bench Model
Max. Drill Size 1/2"
5/8 HP
Spindle Travel 2"
Table 7" x 7"
Height 25"
Weight 60 lbs.

\$359⁹⁹

#DP10



#DP12 Bench Model
Max. Drill Size 5/8"
3/4 HP
Spindle Travel 3³/₈"
Table 12"
Height 35"
Weight 140 lbs.

\$389⁹⁹

#DP12



#DP15

#DP15 Floor Model
Max. Drill Size 5/8"
3/4 HP
Spindle Travel 3³/₈"
Table 12"
Height 64"
Weight 160 lbs.

\$619⁹⁹

#DP15



Rich Evans
Huntington Beach
Body Works

CUT STEEL AS EASY AS DRAWING A LINE!



#PL320

PLASMA CUTTING MACHINES

- Sturdy Metal Cabinets • Solid State Electronics
- 220 Volt Single Phase Electric
- Includes Hand Torch with Cable, Ground Cable with Clamp, and Power Cord

**MEAN
GREEN
PLASMA**

*Requires compressed air to operate / 3cfm
@ 30-60 pounds (2hp compressor)*

**CRAZY
LOW PRICES!**

- PL320**
- Cut up to 5/16" Mild Steel
 - Duty Cycle 60%
 - Current Range 20-30 amp Output
 - Weight 18 lbs.

\$449⁹⁹



#PL500

- PL500**
- Cut up to 1/2" Mild Steel
 - Duty Cycle 60% • Variable Output Regulator
 - Current Range 20-40 amp Output
 - Weight 28 lbs.

**MEAN
GREEN
PLASMA**

RATED "INDUSTRIAL"

\$579⁹⁹



MIG WELDERS

- For Home or Light Duty Industrial Use
- Sturdy Metal Cabinets • Solid State Electronics
- 220 Volt Single Phase Electric • Machines Include Power Source, Mig Gun and Cable, Ground Cable with Clamp, and Power Cord.

- MIG-190**
- Weld Mild Steel from .025" up to 3/16" or .047" up to .080 Aluminum
 - Uses Flux Core Wire - No Gas Needed!
 - Amperage Range 50-120 • Weight 20 lbs.

**MEAN
GREEN
MIG**

#MIG-190



\$279⁹⁹

- MIG-300**
- Weld Mild Steel from .025" up to 5/16" or .047" up to 1/4" Aluminum
 - Infinitely Variable Wire Feed Speed
 - Variable Output Current
 - Amperage Range 40-180 • Weight 22 lbs.
 - Use with Gas for Best Results



#MIG-300

#MIG-300

**MEAN
GREEN
MIG**

\$599⁹⁹



NOW WELD LIKE THE PRO'S AT HOME!

TIG WELDER

- For Home or Light Duty Industrial Use
- Sturdy Metal Cabinet
- Solid State Electronics
- 220 Volt Single Phase Electric
- Weld from .025" up to 3/16" Mild Steel
- Amperage Range Output: 10-160
- Infinitely Variable Output Control
- Duty Cycle 60%

- Includes Power Source, Electrode Holder, Ground Cable with Clamp and Power Cord

\$469⁹⁹



#TIG-180

AC/DC INVERTER TIG WELDER

- For Home or Light Duty Industrial Use
- AC/DC TIG Welding
- AC Welding for Aluminum and Steel
- Square Wave Output, Stable Arc, HF
- 60% Duty Cycle
- 220 Volt Single Phase Electric
- Amperage Range Output: 10-250
- Includes MMA Function for Stick Welding
- Includes TIG and Stick Torches, Ground Clamp, Power Cord, and Accessories

\$999⁹⁹

MEAN GREEN TIG



#TIG-250



#TIG-F

FOOT CONTROL FOR #TIG-250 **\$89.99**

Woodward Fab Metal Working Equipment



AUTO DARKENING WELDING HELMET

- Large 3.86" x 1.73" View Area
- 4.33" x 3.54" Filter Area
- Range Din-9-13
- Use for Arc, Mig, Tig Welding
- Automatic On/Off
- Use in Temperature Range 23 - 131 Degrees f
- Use 2 Lithium Batteries with Solar Assist - Included
- Adjustable Ratchet Style Head Gear
- Reaction Time 1/25,000 of a Second

\$119⁹⁹ #WELDH2



#WFWT2030

ECONOMY FOLDING WELDING TABLE

- Large 20" x 30" Working Surface
- Heavy 14 Gauge Steel Top with Slots for Clamping
- Adjustable Height 28" - 34"
- Wheels Make Moving Around the Shop Easy
- Rubber Feet Keeps the Table Steady
- Folding Design for Easy Storage

\$189⁹⁹ #WFWT2030

WELDER CART

\$147⁹ #WC8202



CAST STEEL ANVILS

- High Strength Cast Steel with High Impact Toughness - NOT CAST IRON!
- Tensile Strength is 87,000 PSI with a 45-55 Rockwell Hardness
- Each Anvil Features 2 Horns, a Hardy Hole (square) and a Pritchel Hole (round)

#A11	11 Pounds	\$64.95
#A22	22 Pounds	\$127.95
#A66	66 Pounds	\$318.95
#A154	154 Pounds	\$879.95
#A220	220 Pounds	\$1199.95



**We Know What We Sell!
Call Us!**



WELDING POSITIONING TABLE

- All Steel Construction
- 38" x 47" Top x 39" Height
- Thick .006" Top Plates with 45mm (5/8") Holes on 2" Centers
- Weight Capacity 2600 Pounds
- Adjustable Leveling Pads
- Weight 535 Pounds

\$1999⁰⁰ #WT-38-47-S



CAST IRON WELDING POSITIONING TABLE

- 31" x 27" Top x 37" Height
- Finish Machined Top to .0025" Tolerance per foot
- Corrosion Resistant Plasma Nitride Finish with a 49.7 Rockwell Hardness
- 1" Thick Top and Sides with (1 1/8") Holes on 1000MM (4") Centers
- Adjustable Leveling Pads
- Weight 885 Pounds

\$3299⁰⁰ #WT-31-47-C

THE ORIGINAL Heck][HEUER Vise



Tools for Professionals
THE ORIGINAL
Made in Germany

1. Zinc spindle key with riveted safety rings made of steel
2. Drop-forged front jaw
3. Protected precision spindle bearing
4. Surface-hardened clamping jaws
5. Slim but stable guide tracks (drop-forged) provide greater clamping depth
6. High, optimally distributed clamping force from the centrally located and well-protected spindle with double action trapezoid thread allowing quick opening and closing
7. Hardened pipe-gripping jaws as production standard
8. Drop-forged rear jaw with specially formed anvil
9. Strong, forged spindle nut
10. Finished drop forged guiding brackets
11. Guide adjustable by centrally located screw
12. Internal dual-prism guide track preventing fouling and damages. Large track surfaces fully machined to guarantee precision and long service life.

FORGED STEEL][HEUER Vise the original forged entirely from steel!



4"	VH100100	\$389.99
5"	VH100120	\$499.99
5.5"	VH100140	\$699.99
6"	VH100160	\$969.99
7"	VH100180	\$1129.99

The Heuer vise is the finest bench vise in the world. Born in Germany and still made in Germany.

In 1925 Josef Heuer was granted his first patent for the "Duel Prism - Guide Track" design.

The Heuer vise is constructed from a forged steel frame, 35% stronger than cast iron, making it the best choice for precision, smooth as silk machined surfaces and indestructible vise.

FORGED STEEL][HEUER Vise with replaceable, reversible jaws



5"	VH101120	\$659.99
5.5"	VH101140	\$869.99
6"	VH101160	\$849.99

Heck] [HEUER Vise ACCESSORIES

FOLD & STOW FIXTURE

Simply pull the front knob and the vise slips under your bench. Keeps your bench surface clear.



5"	VLH105120	\$789.99
5.5"	VLH105140	\$789.99

FOLD & STOW FIXTURE

Adjustable height 0-7", Rotates 360 degrees.



5"	VCLH106120	\$1295.99
5.5"	VCLH106140	\$959.99



ADD A ROTATING BASE

360 degree rotation
Sealed swivel to keep dirt out



ROTATABLE ADJUSTABLE HEIGHT FLOOR STAND

34" - 42" high

5"	VLH117120	\$729.00
5.5"	VLH117140	\$499.00
6" - 7"	VLH117160	\$499.00



C-CLAMP MOUNT

Up to 2 3/8" opening

4"	VTC119100	\$99.99
5"	VTC119120	\$149.99

4"	VRH103100	\$109.99
5"	VRH103120	\$165.99
5.5"	VRH103140	\$229.99
6" - 7"	VRH103160	\$290.99

Heck

WOODWARD-FAB



#WVF6.5

CAST IRON VISE 6 1/2" JAWS Industrial Size

- Heavy duty solid cast iron construction
- Swivel base
- Replaceable hardened steel jaws
- Pipe jaws
- Large anvil area
- Sealed ram - Ideal for use around grinding or welding
- Weight 70 pounds

\$359⁹⁹



WVF4.0

CAST IRON VISE 4" JAWS

- Heavy duty solid cast iron construction
- Swivel base
- Replaceable hardened steel jaws
- Pipe jaws
- Jaws also offer V-grooves for holding rounds such as tube or bolts
- Weight 19 pounds

\$89⁹⁹

] [HEUER MAGNETIC SNAP-IN PROTECTIVE JAWS



FOR USE WITH ALL OUR VISES

Size	POLYURETHANE	Price	ALUMINUM	Price
100 (4")	VCH108100	\$64.99	VCH109100	\$85.99
120 (5")	VCH108120	\$69.99	VCH109120	\$89.99
140 (5.5")	VCH108140	\$88.99	VCH109140	\$99.99
160 (6")	VCH108160	\$93.99	VCH109160	\$102.99
180 (7")			VCH109180	\$102.99
Size	FELT	Price	RUBBER	Price
100 (4")	VCH113100	\$93.99	VCH112120	\$83.99
120 (5")	VCH113120	\$98.99	VCH112140	\$88.99
140 (5.5")	VCH113140	\$102.99	VCH112160	\$93.99
160 (6")	VCH113160	\$107.99	VCH112180	\$94.99
180 (7")	VCH113180	\$107.99		



WOODWARD FAB
P.O. BOX 425
1498 OLD U.S. 23
HARTLAND, MI 48353

Ask About Special Lease Pricing

#WFSS101-2



\$199⁹⁹

SHRINKER/STRETCHER SET

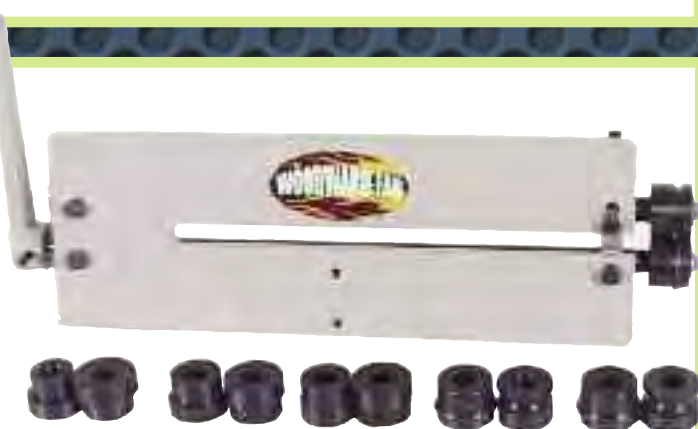
- Our Entry Level Kit Includes 2 Cast Iron Bodies, 2 Handles with Shrinking and Stretching Jaws
- 18 Gauge Capacity Mild Steel or 1/16" Aluminum



#WFSG

- Easy to Read
- 3 1/4" Diameter
- Engraved Scale
- Read Gauges from 30 to 0 Gauge on one side, on back side read from .0125" to .3125"

SHEET METAL THICKNESS GAUGE **\$12⁹⁵** #WFSG



BEAD ROLLER

#WFBR6

- Easy to Operate
- Includes 6 Sets of Dies; 1/4", 3/8" and 1/2" beading dies, 1/16", 1/8" and 1/4" step dies
- Clamps in a Bench Vise
- 18" Deep Throat
- 18 Gauge Capacity

\$169⁹⁹



PLASTIC CAR COVERS

- 3 Mil Thick Plastic
- Protection from Dust, Bird Droppings and Shop Dirt
- Ideal for Indoor Storage or a Drizzle at Your Next Car Show

#WFCCC-Small 19'

\$10⁰⁰

#WFCCC-Med. 22'

\$10⁵⁰

#WFCC-Large 24'

\$11⁵⁰

Toll Free 800.391.5419

Phone 810.632.5419

Fax 810.632.6640

www.woodward-fab.com



CALL YOUR FRIENDS AT 1.800.391.5419

September 2016. Prices & specifications subject to change without notice.