



TWENTY  
THOUSAND  
THREE

mpd  
racing

# FOUNDED OVER THIRTY YEARS AGO

Founded over 30 years ago, MPD Racing was launched with one purpose: to develop and market the best possible components for Sprint and Midget racers. That vision of creating the best component manufacturing business in the USA remains the core of our mission today.

Our continued focus on superior quality and performance, combined with unrivaled customer service, makes MPD Racing the brand of choice for Sprint and Midget race teams around the world.

Today, you can find our products at authorized distributors both across the US and abroad, as well as online at [www.mpd racing.com](http://www.mpd racing.com)







# SWAY & TORSION BARS

## STOCK CAR FRONT SWAY BARS

CNC-machined from aircraft-quality alloy steel for improved memory and consistency. MPD Racing gun-drilled sway bars offer significant weight savings without negatively impacting performance. The center diameter is made larger so the bar will have the same spring rate as a solid bar, ensuring that no chassis adjustments are necessary when switching from solid to gun-drilled bars. Bars are heat treated, and then polished to remove surface imperfections. Sway Bars are 37.5" long and shipped in a special locking tube for storage and protection.



MPD375100

Part No.	Description
<a href="#">MPD375100</a>	1" Diameter, 37-1/2" Long, 48-Spline
<a href="#">MPD375125</a>	1-1/4" Diameter, 37-1/2" Long, 48-Spline
<a href="#">MPD375150</a>	1-1/2" Diameter, 37-1/2" Long, 48-Spline

## 30" & 29" TORSION BARS

Made of a high-quality 4340 steel alloy and heat treated to our exacting specifications, our torsion bars have won more Sprint Car championships than all other brands combined. Torsion bars feature 1-1/8" diameter x 48-spline ends, and may be ordered in diameters from 0.925" to 1.065", in both 29" and 30" lengths. Manufactured in the USA with all-American materials.



MPD301025

Part No.	Diameter	Arm Length										
		11.0"	11.5"	12.0"	12.5"	13.0"	13.5"	14.0"	14.5"	15.0"	15.5"	16.0"
30" TORSION BAR WITH 23" EFFECTIVE LENGTH												
MPD300925	0.925"	294	269	247	228	210	195	181	169	158	148	139
MPD300950	0.950"	328	300	276	254	235	218	203	189	177	165	155
MPD300975	0.975"	365	334	306	282	261	242	225	210	196	184	172
MPD300987	0.987"	380	340	322	290	270	251	235	220	201	194	181
MPD301000	1.000"	403	369	339	312	289	268	249	232	217	203	191
MPD301015	1.015"	424	388	356	328	303	281	261	244	228	213	200
MPD301025	1.025"	403	406	373	344	318	295	274	256	239	224	210
MPD301050	1.050"	487	446	410	378	349	324	301	281	262	246	230
MPD301065	1.065"	510	467	429	395	365	339	315	293	274	257	241
29" TORSION BAR WITH 23" EFFECTIVE LENGTH												
MPD290925	0.925"	294	269	247	228	210	195	181	169	158	148	139
MPD290950	0.950"	328	300	276	254	235	218	203	189	177	165	155
MPD290975	0.975"	365	334	306	282	261	242	225	210	196	184	172
MPD290987	0.987"	380	340	322	290	270	251	235	220	201	194	181
MPD291000	1.000"	403	369	339	312	289	268	249	232	217	203	191
MPD291015	1.015"	424	388	356	328	303	281	261	244	228	213	200
MPD291025	1.025"	403	406	373	344	318	295	274	256	239	224	210
MPD291050	1.050"	487	446	410	378	349	324	301	281	262	246	230
MPD291065	1.065"	510	467	429	395	365	339	315	293	274	257	241

## STORAGE TUBE

### [MPD99700](#)

The same tube used to protect MPD torsion bars during storage or transport may also be purchased separately. Protective tube is 1-1/2" diameter x 16-3/4" long and weighs just .20 lbs.



# SWAY & TORSION BARS

## 26" TORSION BAR

Manufactured from the same high-grade alloy steel as the Sprint Car bars, MPD Racing 26" torsion bars are 7/8" diameter x 48-spline. With lightweight hollow construction, torsion bars are available from .600" to .800" diameter in 26" lengths to provide a range of options for effective wheel rates. Each bar is packaged in a protective tube at no extra charge.



MPD26700

Part No.	Diameter		Part No.	Diameter	
<a href="#">MPD26600</a>	0.600"	7/8" x 48-Spline	<a href="#">MPD26725</a>	0.725"	7/8" x 48-Spline
<a href="#">MPD26625</a>	0.625"	7/8" x 48-Spline	<a href="#">MPD26737</a>	0.737"	7/8" x 48-Spline
<a href="#">MPD26650</a>	0.650"	7/8" x 48-Spline	<a href="#">MPD26750</a>	0.750"	7/8" x 48-Spline
<a href="#">MPD26675</a>	0.675"	7/8" x 48-Spline	<a href="#">MPD26775</a>	0.775"	7/8" x 48-Spline
<a href="#">MPD26700</a>	0.700"	7/8" x 48-Spline	<a href="#">MPD26800</a>	0.800"	7/8" x 48-Spline
<a href="#">MPD26712</a>	0.712"	7/8" x 48-Spline			

## TORSION BAR BUSHINGS

Part No.	Description
<a href="#">MPD30104</a>	Torsion Bar Bushing .095" Sprint Car-Nylon (4-Pack)
<a href="#">MPD30110</a>	Torsion Bar Bushing .095" Sprint Car-Nylon (10-Pack)
<a href="#">MPD30204</a>	Torsion Bar Bushing .095" Sprint Car-Bronze (4-Pack)
<a href="#">MPD30210</a>	Torsion Bar Bushing .095" Sprint Car-Bronze (10-Pack)



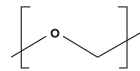
MPD30210



MPD30110

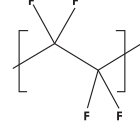
### NYLON BUSHING FEATURES:

#### POLYOXYMETHYLENE



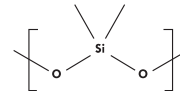
Less Friction  
Properties Remain Constant with Humidity  
High Impact Strength

#### POLYTETRAFLUOROETHYLENE



Improves Abrasion Resistance  
Improves Lubrication

#### POLYSILOXANE



Improves Weatherability  
Improves Thermal Stability

## SPRINT TORSION BAR RETAINERS

Natural aluminum retainers are engineered specifically for use with MPD Racing 1-1/8" diameter torsion bars, and feature cadmium-plated Grade 8 bolts. Torsion bar retainers are made of black anodized aluminum.

Part No.	Description
<a href="#">MPD30001</a>	Torsion Bar Retainers, Sold in Pairs
<a href="#">MPD30002</a>	Torsion Bar Retaining Caps for 1-1/8" Threaded Bar, Sold in Pairs

MPD30001



MPD30002

# SPRINT CAR DRIVE LINE

## TORQUE BALL HOUSING

Machined from black anodized billet aircraft aluminum, these torque ball housings are the strongest torque ball housings on the market! It is the only housing on the market that pivots in the same linear pattern as the U-joint, letting your car drive harder and roll freer.

Part No.	Description
MPD68200	4.45" Torque Ball Housing
MPD68205	Torque Ball Housing Bolt Kit



## TORQUE BALLS

MPD Torque Balls are machined out of solid aluminum billet and are hard anodized to keep from binding.

Part No.	Description	Matching Components
MPD64202	4.45" Ball Diameter 2.995" I.D. Long Ball	MPD68200
MPD64203	4.45" Ball Diameter 3.005" I.D. Standard Ball	MPD68200
MPD64205	4.45" Ball Diameter 2.995" I.D. Standard Ball	MPD68200



MPD64205

MPD64202

## ALUMINUM TORQUE TUBES

MPD anodized aluminum torque tubes are turned to 2.990" O.D. and reamed to 2.628" I.D. to ensure .005" clearance between the torque ball and torque tube. Tubes are available in 27", 28", 32", and 35" lengths. The torque collars have been lightened with a ball mill to decrease weight. All torque tube assemblies are supplied with an O-ring.

Part No.	Description	Matching Components
MPD64628	Torque Tube, Black, 28"	MPD64205, MPD64202
MPD64632	Torque Tube, Black, 32"	MPD64205, MPD64202
MPD64635	Torque Tube, Black, 35"	MPD64205, MPD64202
MPD64650	Torque Tube HD, Long Collar, Black, 28"	MPD64205, MPD64202
MPD64601	Torque Tube, Black, 27", 3" O.D.	MPD64203



MPD64628

## 28" STEEL TUBULAR DRIVESHAFT

### MPD65104

Made with tough 4130 steel, then gun drilled to reduce weight, MPD Racing tubular driveshafts feature 10-spline ends.





# SPRINT CAR DRIVE LINE

## SHIFT LEVERS

Our lightweight shift levers have a positive lock system to securely lock the car into gear. Spring-loaded lever locks into place in either the "in" or "out" position. The black anodized shift lever is offered in both a weld-on or clamp-on style.

Part No.	Description	Weight
<a href="#">MPD84000</a>	Shift Lever - Weld-On	0.40 lbs.
<a href="#">MPD84000C</a>	Shift Lever - Clamp-On	0.55 lbs.
<a href="#">MPD84010</a>	Clamp for Push-Lock Shifter Cable	
<a href="#">MPD84001</a>	Shifter Installation Kit, Weld-On Bracket	
<a href="#">MPD84015</a>	Shifter Installation Kit, Cable Tab / Weld-On Bracket	
<a href="#">MPD84020</a>	Cable - Complete With Ends And Ready To Install	



## SPRINT CAR AXLE SPACER KIT

MPD Racing's axle spacer system uses a split cone spacer which allows moving the wheel in or out without going back to look for the right size spacer. Once the spacing is correct, simply move the existing spacers from the inside of the wheel to the center of the split cone or vice versa. Kit includes male cone for the wheel center and female cone for the wheel nut, (2) 1/4" and (4) 1/2" spacers. Some cars may require an additional spacer between the system and the birdcage. Black anodized aluminum. Made in the USA.

Part No.	Description
<a href="#">MPD87200</a>	Coned Sprint Car Axle Spacer Kit, (2) 1/4" Spacers and (4) 1/2" Spacers
<b>Extra Spacers for Kit</b>	
<a href="#">MPD87201</a>	Male Cone - Sold Each
<a href="#">MPD87202</a>	Female Cone - Sold Each
<a href="#">MPD87203</a>	Male/Female Kit
<a href="#">MPD87009</a>	1/2" Wide - Sold Each
<a href="#">MPD87015</a>	1/4" Wide - Sold Each
<a href="#">MPD87007</a>	7/8" Wide, Tapered - Sold Each
<a href="#">MPD87008</a>	7/8" Wide, 42-Spline - Sold Each



# SPRINT CAR TETHERS

## SPRINT CAR FRONT AXLE TETHER SYSTEM

Approved for use by Knoxville Raceway and the WoO (World of Outlaws), front axle tether system adds a measure of safety to open wheel racing in the event of front axle breakage. Clamps install easily to front axle, and tethers are then connected to the front motor mount tube. Kits include (2) billet clamps, (2) tethers, and required hardware. Tether, clamp, and hardware kits are also available separately for replacement purposes, or for spare front axles.

Part No.	Description
<a href="#">MPD10500</a>	Axle Tether Pair with 2.5" Clamps
<a href="#">MPD10501</a>	Axle Tether Pair with 2.38" Clamps
<a href="#">MPD10502</a>	Axle Tether Pair with 2.25" Clamps
<a href="#">MPD10525</a>	Axle Clamp Pair 2.5" with Hardware
<a href="#">MPD10526</a>	Axle Clamp Pair 2.38" with Hardware
<a href="#">MPD10527</a>	Axle Clamp Pair 2.25" with Hardware
<a href="#">MPD10528</a>	Axle Clamp Hardware Only



MPD10500



MPD10525



MPD10526



MPD10527

## KING PIN TETHER KIT

King pin tether from MPD Racing is required by World of Outlaws and many other Sprint Car sanctioning bodies and tracks. It attaches to the king pins so that they will remain with the race car in the event of a crash.

Part No.	Description
<a href="#">MPD10510</a>	King Pin Studs Pair
<a href="#">MPD10506</a>	For 50" Axle, King Pin Tether with Hardware
<a href="#">MPD10507</a>	For 51"-53" Axle, King Pin Tether with Hardware



MPD10506



MPD10507



MPD10510



# SPRINT CAR FRONT END

## LIGHTWEIGHT SPRINT HUBS

These billet direct-mount hubs are machined from 6061-T6 aluminum for superior precision and strength. Kit includes left hub with rotor mount, right hub without rotor mount, bearings, seals, wheel nuts, and dust cap.

Part No.	Description
<a href="#">MPD28500</a>	Complete Kit, Includes Right and Left Sides
<a href="#">MPD28510</a>	Direct-Mount Billet Hub, Left Side Only, Complete
<a href="#">MPD28512</a>	Direct-Mount Billet Hub, Right Side Only, Complete

## HUB BEARING SPACER

### MPD13607

Bearing spacers feature a patented design that improves wheel spin by 1200% and reduces bearing maintenance and wear. Threaded adjustment makes setting end play or preload easy.



## SPRINT SPINDLES

Sprint car spindles are manufactured using a 7075-T6 aluminum forging and are offered with titanium or steel snout and include lock nuts.

Part No.	Description
<a href="#">MPD14000</a>	Spindle with Steel Snout, 2 Ear
<a href="#">MPD14007</a>	Spindle with Steel Snout, 7°, 2 Ear
<a href="#">MPD14010</a>	Spindle with Titanium Snout, 2 Ear
<a href="#">MPD14100</a>	Asphalt Spindle, 4 ear



MPD14000



MPD14010



MPD14100

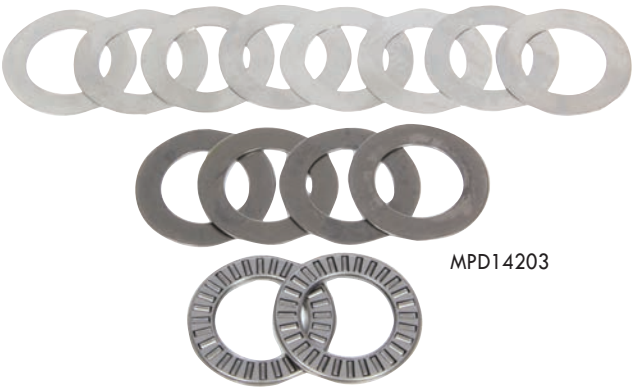
## SPINDLE REPLACEMENT PARTS

Part No.	Description
<a href="#">MPD14001</a>	King Pin, 5/8", Steel
<a href="#">MPD14011</a>	King Pin, 5/8", Titanium
<a href="#">MPD14300</a>	King Pin Bushing

# SPRINT CAR FRONT END

## SPINDLE NUT & SHIM KITS

Part No.	Description
<a href="#">MPD14201</a>	Sprint Spindle Thrust Bearing, Pack of 4
<a href="#">MPD14202</a>	.030" Thrust Washer, Pack of 4
<a href="#">MPD14203</a>	King Pin Thrust Bearing, Roller, Steel, Kit
<a href="#">MPD14204</a>	0.005" Shim, Pack of 10
<a href="#">MPD14205</a>	0.007" Shim, Pack of 10
<a href="#">MPD14206</a>	0.010" Shim, Pack of 10
<a href="#">MPD14207</a>	0.015" Shim, Pack of 10
<a href="#">MPD47200</a>	Spindle Nut Socket



MPD14203

## ASPHALT BILLET HUBS

Our new asphalt hubs are precision machined from 6061-T6 aluminum. It features a direct-mount floating rotor with all the hardware included. Comes complete with aluminum lug nuts, wheel bearings, and seals. Uses step-style spindle.

Part No.	Description
<a href="#">MPD17000</a>	Direct Mount, 6 Pin, Bearings, Aluminum, Black Anodized, Sprint, Each
<b>Replacement Parts</b>	
<a href="#">MPD17010</a>	Wheel Stud, Replacement, 5/8"-11 Right Hand Thread, 2-1/2" Long, Steel
<a href="#">MPD17012</a>	Wheel Stud, Replacement, 5/8"-11 Right Hand Thread, 2-1/2" Long, Titanium
<a href="#">MPD17015</a>	Lug Nut, 5/8" Right Hand Thread, Aluminum, Natural, Set of 3



MPD17010

MPD17012

MPD17015



MPD17000

## ASPHALT SPRINT CAR BIRDCAGES

This state-of-art sprint card bird cage is designed with strength in mind, but still emphasizes weight savings. The 7075 billet aluminum bird cage needs no bolt-on hardware, giving it maximum strength. These cages fit most asphalt cars including beast and hurricane chassis

Part No.	Description
<a href="#">MPD81120</a>	Left Hand Birdcage
<a href="#">MPD81220</a>	Right Hand Birdcage



MPD81120



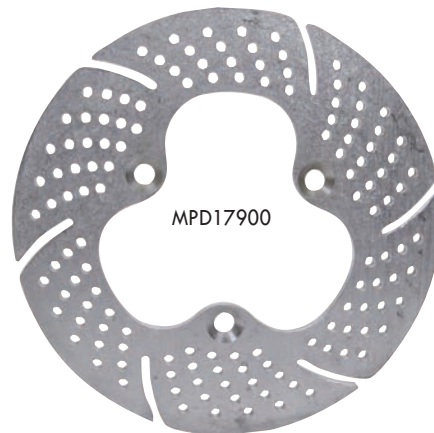
MPD81220

# SPRINT CAR BRAKES

## BRAKE ROTORS

All rotors have been drilled and lightened to significantly reduce rotating weight. Rotors are 3/8" thick and are made of 6061-T651 tooling plate. Each rotor is clear anodized to increase durability and extend usable life.

Part No.	Description
<a href="#">MPD17900</a>	Aluminum Brake Rotor-11"
<a href="#">MPD17904</a>	Aluminum Brake Rotor-10"

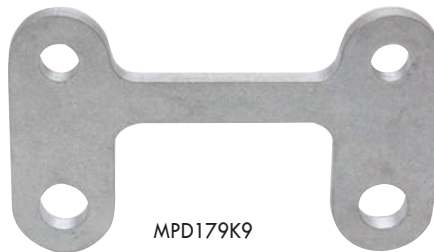


## BRAKE MOUNTS

Part No.	Description	Offset	Caliper B/C	Spindle B/C	Diameter	Width
<a href="#">MPD179K27L</a>	Front	0.66"	5.98"	4.25"	11.19"	1.25"
<a href="#">MPD179K27R</a>	Front	0.66"	5.98"	4.25"	11.19"	1.25"
<a href="#">MPD179K9</a>	Top	—	3.25" / 2 Piston	3.25"	11"	—



MPD179K27L



MPD179K9



MPD179K27R

## FRONT ROTOR MOUNTING KITS

Front rotor mounting kits include 3 stands with bolts. Stands have 1/2"-20 threads through and include 1/2"-20 flathead Allen bolts.

Part No.	Description	Weight
<a href="#">MPD1790K</a>	Front Brake Rotor Mounting Kit, One Per Hub	0.29 lbs.



## SPRINT DRIVE STUDS FOR FRONT HUBS

### MPD12300

Threaded drive stud, with 5/8"-11 thread on pin and 1/2"-20 thread on shank. Fits bolt-on front hubs.



## PAVEMENT HUB LUG NUT

### MPD12400

Aluminum lug nut with 5/8"-11 thread. Sold in packs of three.





# SPRINT CAR STEERING ARMS

## ASPHALT SPRINT CAR STEERING ARMS

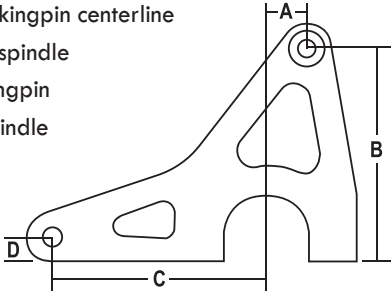
The MPD Racing sprint steering arms are machined from 2024 aluminum, drilled and tapped 1/2" NF for mounting. Available in multiple configurations. Black anodized finish.

Part No.	Description	Weight	Spindle Bolt Center	A	B	C	D
MPD14130	Steering Arm, Left	15.5 oz.	3.75"	N/A	N/A	5.5"-6.125"	1.375"
MPD14135	Steering Arm, Right	1lb. 7oz.	3.75"	1"	6"-6.875"	5.375"-6.25"	1.75"

## STEERING ARM MEASUREMENT GUIDELINES

Please follow these guidelines for providing correct steering arm dimensions (see corresponding diagram):

- A. Drag-link centerline to kingpin centerline
- B. Drag-link centerline to spindle
- C. Tie-rod centerline to kingpin
- D. Tie-rod centerline to spindle



MPD14130



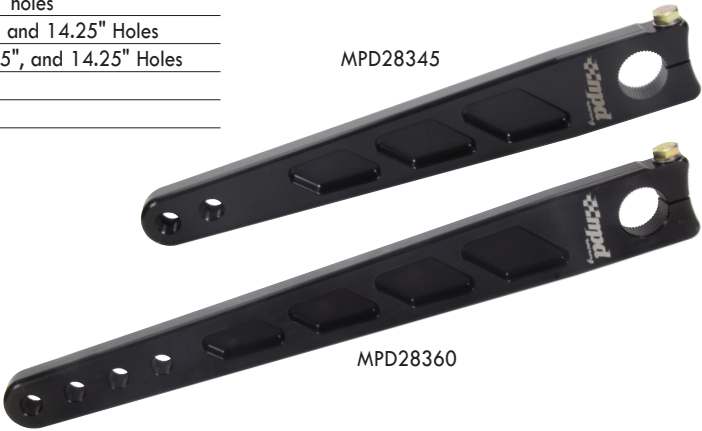
MPD14135

## PITMAN ARMS

MPD offers a variety of different styles of Pitman arms to make sure you get the correct feel of the race car.

Part No.	Description
MPD28340	Pitman Arm, Straight, Black, 10" and 11" holes
MPD28345	Pitman Arm, Angle Broach, Black, 10" and 11" holes
MPD28360	Pitman Arm, Straight, Long, Black, 11.25", 12.25", 13.25", and 14.25" Holes
MPD28365	Pitman Arm, Angle Broach, Long, Black, 11.25", 12.25", 13.25", and 14.25" Holes
MPD17400LT	15" Straight Spline Pitman Arm
MPD17400LTS	15" Angled Spline Pitman Arm

MPD28345



MPD28360

## CONE SPACERS

Part No.	Description	Weight
MPD41000	Cone Spacer Plain	.01
MPD41002	Cone Spacer Black	.01
MPD41005	Cone Spacer, Set of 10, Plain	
MPD41006	Cone Spacer, Set of 10, Black	



MPD41000



MPD41002

# MIDGET REAR AXLE

## MIDGET BIRDCAGES

The MPD billet birdcages are made of billet 6061 aluminum. They come complete with split race angular contact bearings and hardware

Part No.	Description
<a href="#">MPD20100</a>	Left Rear
<a href="#">MPD20101</a>	Right Rear
<b>Replacement Parts</b>	
<a href="#">MPD20110</a>	Flag for Right Rear Midget Birdcages
<a href="#">MPD20111</a>	Flag for Left Rear Midget Birdcages
<a href="#">MPD20112</a>	Stand-off Spud for Midget Birdcages
<a href="#">MPD20115</a>	Bearing Spacer, 31-Spline, for Midget Birdcages
<a href="#">MPD20120</a>	Midget Birdcage Bearing, Angular Contact



MPD20111



MPD20112



MPD20115



MPD20120



MPD20100

## MIDGET AXLE SPACERS - 31-SPLINE

Part No.	Description
<a href="#">MPD87200-31</a>	Coned Midget Axle Spacer Kit with (2) 1/4" Spacers and (4) 1/2" Spacers, 31-Spline
<b>Extra Spacers for Kit</b>	
<a href="#">MPD87201-31</a>	Male Cone - Sold Each
<a href="#">MPD87202-31</a>	Female Cone - Sold Each
<a href="#">MPD87009-31</a>	1/2" Thick - Sold Each
<a href="#">MPD87015-31</a>	1/4" Thick - Sold Each



MPD87200-31

## MIDGET AXLE SPACERS - 36-SPLINE

Part No.	Description
<a href="#">MPD87200-36</a>	Coned Midget Axle Spacer Kit with (2) 1/4" Spacers and (4) 1/2" Spacers, 36-Spline
<b>Extra Spacers for Kit</b>	
<a href="#">MPD87201-36</a>	Male Cone - Sold Each
<a href="#">MPD87202-36</a>	Female Cone - Sold Each
<a href="#">MPD87009-36</a>	1/2" Thick - Sold Each
<a href="#">MPD87015-36</a>	1/4" Thick - Sold Each



MPD87200-36

## MIDGET TORSION STOP IN ALUMINUM

MPD stops are CNC-machined from 2024 aluminum and come complete with adjusting hardware. They are sized to fit 1" torsion bars.

Part No.	Description
<a href="#">MPD27200</a>	Torsion Stop for Midget, Aluminum, Black



# MIDGET FRONT END

## MIDGET HUBS

These billet direct-mount hubs are machined from 6061-T6 aluminum for superior precision and strength. Kit includes left hub with rotor mount, right hub without rotor mount, bearings, seals, wheel nuts, and dust cap.

Part No.	Description
<a href="#">MPD28500</a>	Complete Kit, Includes Right and Left Sides
<a href="#">MPD28510</a>	Direct-Mount Billet Hub, Left Side Only, Complete
<a href="#">MPD28512</a>	Direct-Mount Billet Hub, Right Side Only, Complete



MPD28500

## HUB BEARING SPACER

### [MPD13607](#)

Bearing spacers feature a patented design that provides a noticeable improvement in wheel spin and reduces bearing maintenance and wear. Threaded adjustment makes setting end play or preload easy.



MPD13607

## MIDGET FRONT AXLE

Midget front axles are 44" x 2" x .110" wall 4130 Chrome Moly, and have a black powder-coated finish.

Part No.	Description
<a href="#">MPD28100</a>	Front Axle for Midget 44" x 2" O.D. .110" Wall



## MIDGET SPINDLES

MPD Midget spindles are produced from billet 2024-T3 aluminum and are offered with both steel and titanium shafts. They come complete with spindle lock nuts. Offered in 2 and 4 ear.

Part No.	Description
<a href="#">MPD28400</a>	Midget Billet Spindle, 4 Ear, Steel Shaft, Black
<a href="#">MPD28410</a>	Midget Billet Spindle, 4 Ear, Titanium Shaft, Black
<a href="#">MPD28414</a>	Midget Billet Spindle, 2 Ear, Titanium Shaft, Black
<a href="#">MPD28404</a>	Midget Billet Spindle, 2 Ear, Steel Shaft, Black

MPD28400



## MIDGET KING PINS AND CAPS

MPD king pins are offered in both steel and titanium and come with the cap.

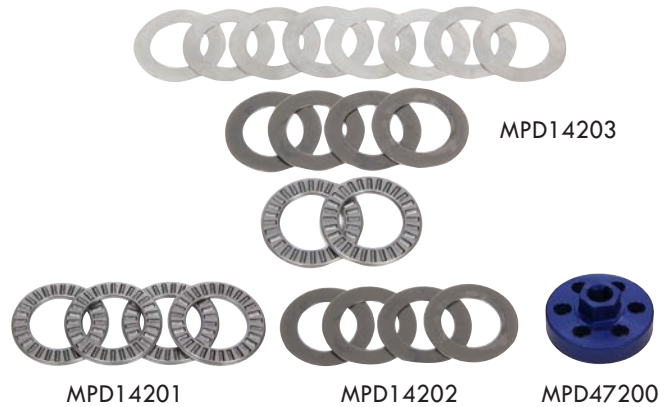
Part No.	Description
<a href="#">MPD28450</a>	Midget King Pin, Steel, with Cap
<a href="#">MPD28454</a>	Midget King Pin, Titanium, with Cap
<a href="#">MPD28456</a>	Midget King Pin Cap, Aluminum



# MIDGET FRONT END

## SPINDLE NUT & SHIM KITS

Part No.	Description
<a href="#">MPD14201</a>	Sprint Spindle Thrust Bearing, Pack of 4
<a href="#">MPD14202</a>	.030" Thrust Washer, Pack of 4
<a href="#">MPD14203</a>	King Pin Thrust Bearing, Roller, Steel, Kit
<a href="#">MPD14204</a>	0.005" Shim, Pack of Ten
<a href="#">MPD14205</a>	0.007" Shim, Pack of Ten
<a href="#">MPD14206</a>	0.010" Shim, Pack of Ten
<a href="#">MPD14207</a>	0.015" Shim, Pack of Ten
<a href="#">MPD47200</a>	Spindle Nut Socket



## MIDGET STEERING ARMS

MPD steering arms are made of a high-quality billet aluminum. These arms work on all Midget steering applications and have 7/16"-20 threaded mounting holes.

Part No.	Description
<a href="#">MPD28250</a>	Steering Arm for Midget, Black
<a href="#">MPD28260</a>	Wishbone Steering Arm for Midget, Black
<a href="#">MPD28270</a>	Combo Steering Arm for Midget, Black



## MPD FRONT BRAKE MOUNTS

Aluminum front brake mounts are built for 10-1/8" rotors and come in a variety of styles.

Part No.	Description
<a href="#">MPD28300</a>	Brake Bracket, Front-Mount, DMI-Style, Black
<a href="#">MPD28310</a>	Brake Bracket, Top-Mount, DMI-Style, Black
<a href="#">MPD28315</a>	Brake Bracket, Front-Mount, Winters-Style, Black

## RADIUS RODS

Machined from black anodized 6061 aluminum, radius rods are 1" O.D. with 5/8"-18 female threads, and are available in most common lengths.

Part No.	Description	Part No.	Description
<a href="#">MPD41180</a>	18"	<a href="#">MPD41230</a>	23"
<a href="#">MPD41185</a>	18-1/2"	<a href="#">MPD41235</a>	23-1/2"
<a href="#">MPD41190</a>	19"	<a href="#">MPD 41240</a>	24"
<a href="#">MPD41195</a>	19-1/2"	<a href="#">MPD41245</a>	24-1/2"
<a href="#">MPD41200</a>	20"	<a href="#">MPD41250</a>	25"
<a href="#">MPD41205</a>	20-1/2"	<a href="#">MPD41290</a>	29"
<a href="#">MPD41210</a>	21"	<a href="#">MPD41295</a>	29-1/2"
<a href="#">MPD41215</a>	21-1/2"	<a href="#">MPD41300</a>	30"
<a href="#">MPD41220</a>	22"	<a href="#">MPD41305</a>	30-1/2"
<a href="#">MPD41225</a>	22-1/2"	<a href="#">MPD41310</a>	31"



# MIDGET DRIVE LINES

## 4.45" TORQUE BALL HOUSING

### MPD68200

Machined from black anodized billet aircraft aluminum, these torque ball housings are the strongest torque ball housings on the market! It is the only housing on the market that pivots in the same linear pattern as the U-joint, letting your car drive harder and roll freer.



## TORQUE BALLS

MPD Torque Balls are machined out of solid aluminum billet and are hard anodized to keep from binding.

Part No.	Description	Weight	Matching Components
MPD64201	4.45" Ball Diameter 2.305" I.D. Long Ball	1.05 lbs.	MPD68200
MPD64205	4.45" Ball Diameter 2.995" I.D. Standard Ball	1.20 lbs.	MPD68200



MPD64205

MPD64201

## TORQUE TUBES

MPD Midget torque tube and collar assemblies are turned to 2.3" O.D. to allow 0.005" clearance for the torque ball. The torque collar has two six-hole patterns on a 4" bolt circle, with one set of holes for 5/16" studs and the other for 3/8" studs.

Part No.	Description	Wt.
MPD21600	24" Torque Tube & Collar, 2.300" O.D.	4.00 lbs.
MPD21610	24" Torque Tube & Collar, 2.990" O.D.	4.60 lbs.



MPD21610



MPD21600

# MIDGET ACCESSORIES

## MIDGET PEDALS

MPD pedals fit the most popular chassis and are made of high-quality materials.

Part No.	Description
<a href="#">MPD20400</a>	Throttle Pedal for Midget Chassis
<a href="#">MPD20406</a>	Brake Pedal for Midget Chassis



## MIDGET NERF BARS & BUMPERS

MPD nerfs and bumpers fit the most popular chassis and are made from strong 4130 chromoly steel with a durable black powder-coated finish.

Part No.	Description
<a href="#">MPD25100</a>	Midget Front Bumper, Black
<a href="#">MPD25105</a>	Midget Left Nerf, 4-Point, Black
<a href="#">MPD25106</a>	Midget Right Nerf, 4-Point, Black
<a href="#">MPD25110</a>	Midget Rear Bumper, Black
<a href="#">MPD47500</a>	Nerf Bar Spud Repair Tool





# ENGINE PARTS

## SPARK PLUG GUARD KIT

Don't let mud or rocks ruin your race. These lightweight aluminum spark plug guards have brackets that bolt to your headers with 2 quick-connect fasteners. Kit includes right and left guard, two front, and two rear mounting brackets.

Part No.	Description
<a href="#">MPD18001</a>	Spark Plug Guard, Black Anodized Aluminum, Sprint Car, Kit
<a href="#">MPD18009</a>	Spark Plug Guard Brackets Only, 4-pack



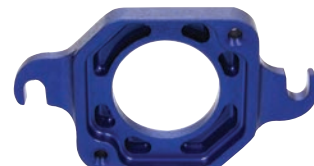
## STEERING GEAR AND PUMP MOUNTS

MPD offers a variety of mounts to cover all the needs of installing steering gears and pumps.

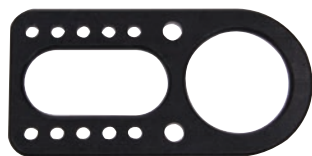
Part No.	Description
<a href="#">MPD18800</a>	Power Steering Mount
<a href="#">MPD18800M</a>	Power Steering Mount, Mag
<a href="#">MPD18820</a>	Upper Power Steering Mount for Shut-Off Valve
<a href="#">MPD18840</a>	Upper Power Steering Mount for Shut-Off Valve, Side-Mount
<a href="#">MPD18900</a>	Power Steering Mount Adapter
<a href="#">MPD18902</a>	Power Steering Pump Mount, Slotted



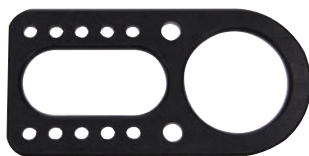
MPD18900



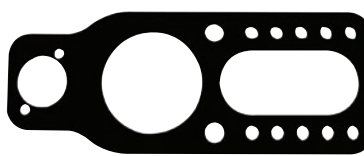
MPD18902



MPD18800



MPD18800M



MPD18820



MPD18840

## CAM DRIVE SEALS

MPD cam seal plates are machined from only the finest billet aluminum material available. The outer diameter is precisely machined for a perfect press-fit for any engine block.

Part No.	Description
<a href="#">MPD78900</a>	Cam Drive Housing, Black, Donovan/Steel, 2.105" O.D.
<a href="#">MPD78800</a>	Cam Drive Housing, Red, Rodeck, 2.090" O.D.
Replacement Part	
<a href="#">MPD78700</a>	Replacement Seal Only



MPD78700

MPD78800



MPD78900

## CAM DRIVE SPUDS

Forged from 220,000 psi alloy chromoly steel to prevent stripping out.

Part No.	Description
<a href="#">MPD78605</a>	Cam Shaft Drive, Short, 5/8"-18 x 1" Left-Hand Thread
<a href="#">MPD7850L</a>	Cam Shaft Drive, Long, 9/16"-18 x 1-1/2" Right-Hand Thread
<a href="#">MPD7850XL</a>	Cam Shaft Drive, Long, 9/16"-18 x 1-3/4" Right-Hand Thread
<a href="#">MPD7870XL</a>	Cam Spud, 3/4"-16 x 1-1/8" Right-Hand Thread



MPD7870XL

## FUEL SHUT OFF

### MPD76504

Lightweight in-line shut-off valve has a -6AN inlet and outlet. Can be mounted anywhere between the fuel pump and the barrel valve.



## ADDITIONAL FUEL SHUT-OFF VALVES

Part No.	Description
MPD73800	In-Line Fuel Shut-Off Valve, -12AN Male Outlet, Aluminum, for MPD Filter
MPD73825	In-Line Fuel Shut-Off Valve, 1-13/16"-20 Male to -12AN Male, Aluminum, for Speedway and Allstar Filters
MPD73850	In-Line Fuel Shut-Off Valve #10, for MPD Filter
MPD73875	In-Line Fuel Shut-Off Valve, 1-13/16"-20 Male to -10AN Male, Aluminum, for Speedway and Allstar Filters



MPD73800



MPD73825



MPD73850



MPD73875

## FUEL BLOCK

### MPD73900

Each fuel block has one -8AN male outlet and three -6AN male inlets. Black anodized aluminum construction. This fuel block is designed with perfect angles to keep the plumbing lines clean and tight. Sold complete with fittings.



## FUEL FILTERS

Part No.	Description
MPD72106	In-Line Fuel Filter, 30-Micron Stainless Element, -6AN Male Inlet, -6AN Male Outlet, Black Anodized Aluminum
MPD72212	In-Line Fuel Filter, 100-Micron Stainless Element, -12AN Male Inlet, -12AN Male Outlet, Black Anodized Aluminum
MPD72306	In-Line Fuel Filter, 30-Micron Stainless Element, -6AN Male Inlet, -6AN Male Outlet, Shut-Off Valve, Black Anodized Aluminum
MPD72412	In-Line Fuel Filter, 100-Micron Stainless Element, -12AN Male Inlet, -12AN Male Outlet, Shut-Off Valve, Black Anodized Aluminum



MPD72212



MPD72412



MPD72106



MPD72306

# TOOLS & ACCESSORIES

## TIRE BEAD BREAKERS

This is the BEST bead breaker made. This portable tool easily breaks down tires on aluminum & steel wheels.

Part No.	Description
<b>MPD18000</b>	15" Bead Breaker
<b>MPD23000</b>	13" Bead Breaker
<b>MPD53000</b>	10" Bead Breaker



MPD18000

## INSPECTION SOCKETS

These handy sockets allow removal of the inspection plugs from the rear end quickly and efficiently.

Part No.	Description
<b>MPD47000</b>	1-7/8" Inspection Socket, 1/2" Drive
<b>MPD47100</b>	1-3/8" Inspection Socket, 1/2" Drive



MPD47000



MPD47100

## BUMPER / NERF SPUD REPAIR TOOL

### MPD47500

Fits all Sprint Car 1" & Midget 7/8" bumper and nerf spuds. Simply drive the tool into the damaged or bent spud with a dead blow. Sold each.



## ALUMINUM WRENCHES

MPD Racing's color-coded anodized aluminum line wrenches have a unique design to allow access in even those hard-to-reach areas. Machined with a 30° angle on one end and a 60° angle on the other, they get where other wrenches can't. Fully radiused grips offer improved handling comfort. Made with 7075 aluminum, wrenches are available in sizes -6AN to -20AN.

Part No.	Description
<b>MPD46006</b>	-6AN Aluminum Wrench - Sold Each
<b>MPD46010</b>	-10AN Aluminum Wrench - Sold Each
<b>MPD46012</b>	-12AN Aluminum Wrench - Sold Each
<b>MPD46020</b>	-20AN Aluminum Wrench - Sold Each



MPD46006



MPD46010



MPD46012



MPD460120

## 3/4" RADIUS ROD WRENCH

### MPD46001

MPD Racing's 3/4" radius rod wrench is the toughest and highest quality wrench you can buy at any price. Made from 7075 aluminum, this durable wrench is designed to last a lifetime.





# APPAREL

## MPD TRUCKER HAT

**MPD90400**

Black and blue mesh snap-back hat



## KNIT BEANIE

**MPD90700**

Tight woven acrylic knit. 8" tight-fitting cut. One size fits all. Black.



## MPD APPAREL

Part No.	Description
<b>MPD90100</b>	MPD Logo T-Shirt, Preshrunk, Sizes S-3XL
<b>MPD90110</b>	MPD Logo T-Shirt Softstyle, 100% Ring Spun Cotton, Sizes S-2XL
<b>MPD90112</b>	MPD Logo Long Sleeve T-Shirt Softstyle, 100% Ring-Spun Cotton, Sizes S-2XL
<b>MPD90300</b>	MPD Sport-Tek Hoodie, Sizes S-2XL



MPD90110 FRONT



MPD90110 BACK



MPD90112 FRONT



MPD90112 BACK



MPD90300

# TERMS & CONDITIONS

## WARRANTY

MPD Racing warrants each new product to be free from defects in both workmanship and materials for a period of ninety (90) days from the date of purchase. Product in question should either be returned to the dealer from which it was purchased, or shipped directly to MPD Racing along with proof of purchase and a complete description of the problem. The product must be returned freight pre-paid; COD's will not be accepted. No parts will be reviewed for inspection if modifications have been made. If, after factory inspection, the part is deemed to be defective, it will be replaced or a refund check will be issued.

## SHIPPING

Standard FedEx Ground/Home Delivery is available for orders with delivery addresses within the US and territories, excluding PO Boxes and Rural Routes. USPS shipping is available for orders with a PO Box, Rural Route, or APO/FPO/DPO address. Orders shipped to a PO Box or Rural Route will arrive within 7-10 business days and some items are too large to ship USPS.



**WARNING! CANCER AND REPRODUCTIVE HARM. [WWW.P65WARNINGS.CA.GOV/](http://WWW.P65WARNINGS.CA.GOV/)**

Some products in this catalog contain materials listed under California Proposition 65.  
For additional details on specific products, visit the MPD Racing website at [mpdracing.com](http://mpdracing.com).  
For additional information on Proposition 65, visit [www.p65warnings.ca.gov/](http://www.p65warnings.ca.gov/)



## DISCLAIMER OF WARRANTY

MPD Racing makes no written, oral, expressed, or implied statement of warranty or guarantee on any product sold, other than for defects in materials or workmanship as stated previously. MPD Racing will not assume liability for personal or property damage resulting from the use or misuse of any product we manufacture or sell, whether on the street or on the race track. Purchase and/or use of these products implies recognition and acceptance of this entire warranty and disclaimer by customer.

## HOW DO I RETURN THE PRODUCT?

For fastest results, please click the CONTACT button on our website, [www.mpd racing.com](http://www.mpd racing.com). We will issue a Return Goods Authorization (RGA) number. Due to our high sales volume, no returns will be accepted without an RGA number. All returns must be unopened, undamaged, unused, uninstalled and complete with all parts, packing materials and instructions. A credit will be issued using the same payment method used for purchase within 5 business days after the product is returned and inspected.





8300 Lane Drive  
Watervliet, MI 49098  
Phone 800-544-2773  
[www.mpd racing.com](http://www.mpd racing.com)



MPD100