



The Performance Intake Company™

2017 PERFORMANCE CATALOG

AIRAID.com



The Performance Intake Company™

THE PERFORMANCE INTAKE COMPANY

THE COMPANY

Call it the power principle: cold air is denser than hot air, and allowing an engine to breathe in cool outside air without restrictions results in more power, better efficiency, and improved fuel economy. This is the principle behind all AIRAID® cold air intake systems. Founded in 1997, AIRAID® is a leading manufacturer of cold air intake systems, premium performance air filters, and PowerAid® throttle body spacers for domestic and import cars, trucks, and SUVs.

Each AIRAID® product line is the result of exhaustive research and development. Our in-house engineering team consists of both mechanical and industrial design engineers using the latest 3-D CAD modeling equipment to produce advanced designs that make more power right out of the box. A portable 3-D scanner and rapid prototyping machine allows AIRAID® to test new products on our in-house SuperFlow flow bench and verify the unmatched fit, finish, and style that AIRAID® customers demand. All products are then tested on our all-wheel-drive Mustang chassis dynamometer to produce real-world performance numbers.

All AIRAID® premium filters are produced in-house using only the finest materials available and highly specialized manufacturing equipment to ensure a level of quality control no other filter company can match. This is just one of many reasons why all of AIRAID®'s filters are backed by our "No-Hassle" lifetime warranty. All of AIRAID®'s product lines are proudly manufactured in the USA.

Each year AIRAID® travels to dozens of shows all over the country, so we're sure to be in your area sometime soon. To keep up on the latest AIRAID® news, products, and events, visit AIRAID.com, and check us out on your favorite social media outlet, whether it's Facebook, Twitter, YouTube or Instagram.

AIR AID .com



Some intake systems are not legal for sale or use on any pollution controlled motor vehicle in California or states adopting California emission procedures. See AIRAID.com for CARB status on each part for a specific vehicle.



@airaidfiltercompany



@airaid



@theairaidway



@airaidfilters

AIR AID .com



The Performance Intake Company™



AIRAIID.com



FILTER TECHNOLOGY

FLOWING RESULTS

AIRAIID® revolutionized the automotive aftermarket in 2002 with the introduction of our SynthaFlow® oiled composite material. This material, which AIRAIID® pioneered after exhaustive research and development, remains the standard by which other filters are judged today. Every AIRAIID® premium filter is built using a combination of precision equipment and the finest materials available along with the attention to detail that only fine hand craftsmanship can provide. We start with multiple layers of cotton gauze and then add our own proprietary blend of synthetic materials, resulting in a filtration system that allows plenty of free-flowing air for increased performance, but not at the cost of letting contaminants get through. In fact, all AIRAIID® premium filters are proven to trap the smallest dirt particles that get past the common cotton-gauze “performance” filters typically found on the market. We are so confident in our filters that we back each and every one of them with a “No-Hassle” warranty; if you ever have a problem with an AIRAIID® filter, we’ll take care of it, no questions asked!

In 2009 AIRAIID® introduced the next generation in filter technology. Our SynthaMax® dry filters feature 100% synthetic filter material, which offers the same outstanding filtering properties as our pioneering SynthaFlow® oiled media, but without the need for periodic oiling. SynthaMax® dry filters are both washable and reusable. When it is time to service the air filter, we offer a premium cleaning solution that cleans the filter without damaging the filter media. Best of all, they look great! At first they seem indistinguishable from the iconic red cotton performance filters, but even after many services, colorfast-dyed SynthaMax® dry will maintain its brand-new appearance. SynthaMax® dry filters are also available with blue or black filter media.



- **SynthaFlow® OILED Cotton/Synthetic Blend**
- **SynthaMax® DRY Super Synthetic**
- **Multiple Layers**
- **Washable & Reusable**
- **Lifetime Limited Warranty**



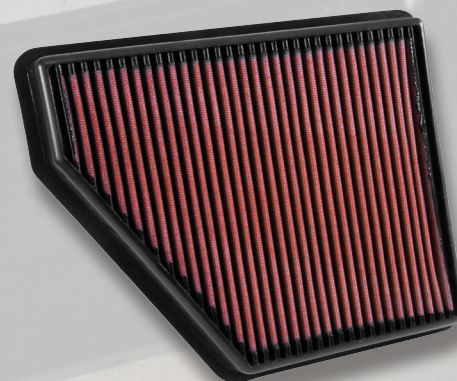
The Performance Intake Company™

FILTER TECHNOLOGY

DROP-IN REPLACEMENT FILTERS

AIRAIID® drop-in replacement filters fit in the factory air box and are drop-in replacements for stock paper filter elements. Constructed using the same premium filter material (SynthaFlow® oiled or SynthaMax® dry) used in our cold air intake systems, these filters offer significant improvements in air flow and filtration while being washable and reusable. Why throw money away on a paper filter each time the old one gets dirty when you can upgrade to a serviceable AIRAIID® premium filter often for less than the cost of two stock replacements?

AIRAIID® drop-in replacement filters require no modifications and installation is as simple as replacing a stock filter.



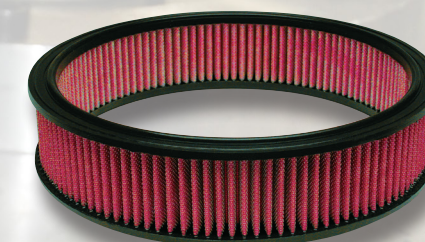
AIR-850-427



AIR-860-161



AIR-850-048-1



AIR-800-350*
*not available in SynthaMax® dry

WHICH FILTER IS BEST FOR YOU?

Dusty Dry Conditions, AIRAIID® recommends SynthaFlow® OILED

Everyday Street Driving, AIRAIID® recommends SynthaMax® DRY

Oiled or dry, both types offer free flowing protection and filtration for outstanding performance.

PRE-FILTER PROTECTION

AIRAIID® pre-filters are highly recommended for applications that are used in extremely dirty environments. The AIRAIID® pre-filters are manufactured from a durable water resistant polyester material. With uniform micro openings that filter out debris 5 microns and larger, dyno & flowbench testing has proven no significant loss in power or airflow using this product.



FILTER CLEANING INSTRUCTIONS ARE ON PAGE 8-9!

AIRAIID.com





The Performance Intake Company™

FILTER TECHNOLOGY

Airaid Universal air filters are suitable for custom applications and for people that want to upgrade their other brand intake with an Airaid premium filter. Universal filters include Race Day, helmet air system, breather and 14" round filters used on carbureted applications. AIRAID® filters come in a variety of shapes and styles and are backed by the same No-Hassle warranty as the rest of our product line.



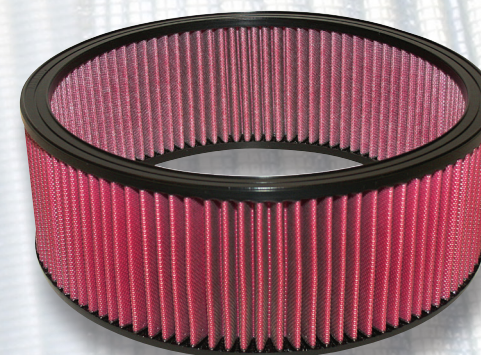
AIR-700-469RD

RACE DAY WIRE MESH FILTERS

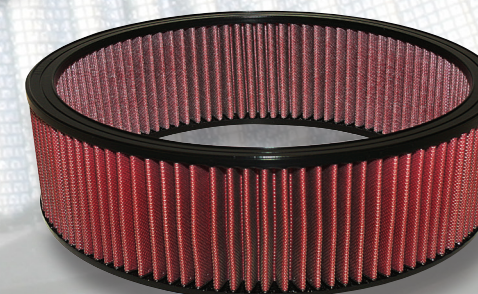
High-performance engines have enormous airflow needs, and racers are always looking for a little something extra that will give them an edge over the competition. AIRAID's new Race Day filters were built with racers in mind.

Race Day Filters are designed strictly to keep large debris out of the engine. Constructed with sturdy polyurethane casings and a durable wire mesh screen, they are built without any filtration media. Race Day Filters are intended for race day only and should only be used at on concrete or asphalt racing surfaces such as a drag strip or road course.

AIR-800-307



AIR-800-351



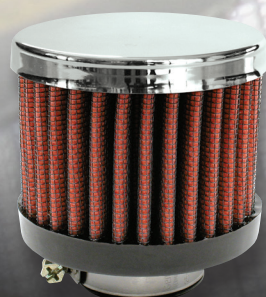
14" ROUND FILTERS

AIRAID® offers a full line of 14" round universal filters to address the unique needs of our customers. These filters are capable of keeping up with the high-flow demands of today's engines while filtering out dirt and debris. Available with a variety of heights and filter media, these new filters offer coverage for a wide range of applications. The 14" diameter filters are available with two types of filter media: – SynthaFlow® oiled, – SynthaMax® dry, – oiled cotton-only (no synthetic layer). All of the round filters are offered in 3", 4", and 5" heights.

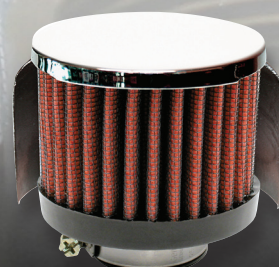
BREATHER FILTERS

AIRAID® PCV breather filters feature hand poured urethane, durable epoxy coated wire mesh and AIRAID®'s outstanding filtration technology that assures maximized ventilation and increased airflow. AIRAID® PCV breather filters are available in urethane, chrome top, shielded chrome top, clamp-on and push-on styles.

AIR-775-145



AIR-772-145



AIR-770-137



HELMET AIR SYSTEM FILTERS

Helmet Air System Filters on off-road vehicles, such as the Parker Pumper, keep the driver and passengers from eating dust during extended rides. They rely on an air filter to keep the air pumped into the helmets clean, and AIRAID® now offers washable and reusable air filters for most common helmet air systems.

The AIRAID® helmet air system filters are constructed of premium SynthaMax® dry filtration media. This non-oiled media provides filtration down to 4 microns and acts as an effective barrier from even the finest dust and silt. The AIRAID® helmet air system filters are available for most popular air system brands with a choice of different heights to accommodate different installation and service interval needs.

AIR-884-105



AIRAID.com



FILTER CLEANING INSTRUCTIONS ARE ON PAGE 8-9!



The Performance Intake Company™

FILTER CLEANING

CLEANING KITS

AIRAIID® cleaning solution is uniquely formulated to clean without damaging the gauze filter media. AIRAIID® performance oil forms an additional line of defense against dirt without limiting airflow. Clean your AIRAIID® filter every 30,000 to 50,000 miles for normal driving, or more often for off-road and heavy dust conditions.



1. Clean

1. Clean - Gently shake off and brush away excess dirt. Spray on AIRAIID® cleaning solution so that the filter is fully saturated, and let soak for 10 minutes. Rinse filter from the inside out until the water comes through clear. Use only low pressure from a tap or garden hose.



2. Dry

2. Dry - Allow filter to air dry. A fan may be used to speed up the process. DO NOT use heated air blowers, compressed air or open flame.



3. Apply

3. Apply oil* - Make one careful application of AIRAIID® performance oil to each filter pleat on the outside of the filter only. Allow oil to seep into the filter for 20 minutes. Lightly re-oil any areas that still appear dry.

*Not necessary with SynthaMax® dry filter

SYNTHAMAX® DRY FILTER CLEANING SOLUTION

Specially formulated to clean dry filters in two simple steps!



AIR-790-558

SynthaMax® dry filter cleaning solution

Servicing your AIRAIID® SynthaMax® dry air filter just got easier with AIRAIID®'s premium dry filter cleaning solution. Specially formulated to clean without breaking down the synthetic filter media in all AIRAIID® dry air filters, the new cleaning solution breaks up dirt and other contaminants to restore airflow and performance.

AIRAIID® recommends using only AIRAIID® dry filter cleaning solution to clean your AIRAIID® filter. The solution helps ensure a long filter life while maintaining filter efficiency.

SYNTHAFLOW® OILED FILTER CLEANING SOLUTION

Specially formulated to clean oiled filters in three simple steps!



AIR-790-551

Aerosol red oil filter cleaning kit

If your annual mileage is low, be sure to check the filter once a year to see if oiling is needed.

Use only AIRAIID® cleaning solution to clean your AIRAIID® filter. Never use gasoline, detergents, steam cleaning or parts solvent.

Your AIRAIID® premium filter is pre-oiled and ready to use right out of the package. Always oil your AIRAIID® premium filter after each cleaning.

Use only AIRAIID® filter performance oil. Never use transmission fluid, motor oil, diesel fuel, or light weight oils.

ALSO AVAILABLE:

AIR-790-550
Squeeze SynthaFlow® red oil filter cleaning kit

AIR-790-560
Squeeze SynthaFlow® blue oil filter cleaning kit

AIR-790-554
SynthaFlow® Filter cleaning solution

AIR-790-556
Aerosol SynthaFlow® red oil bottle

AIR-790-555
squeeze SynthaFlow® red oil bottle

AIR-790-565
squeeze SynthaFlow® blue oil bottle

AIRAIID.com



MORE CLEANING PRODUCTS AVAILABLE ONLINE!



The Performance Intake Company™

PERFORMANCE INTAKE SYSTEMS

BOLT-ON HORSEPOWER

Call it the Power Principle: Better breathing equals more horsepower and torque. In order to fully understand this philosophy, you have to get down to basics. Since an engine is essentially a giant air pump, improving the air flow efficiency creates more power. On most stock intake systems, the main air flow restrictions are the intake box, the actual air inlet to the box and the paper air filter inside.

The best way to bolt on more horsepower and torque by improving air flow to an engine is with an AIRAID® intake system. All AIRAID® intake systems are computer designed and dyno tested and tuned to extract maximum performance for each application.

COLD AIR DAM INTAKES

CAD Intake systems retain the stock filter location but give the stock intake system a big boost with the addition of a huge air inlet that provides a steady, free-flowing supply of cold air. This is done via cold air dam panels, which mount in the factory air box location and utilize any factory cold air inlet ducts that are present, while adding additional cold air passages to the filter. These panels also keep the filter isolated from the hot engine compartment air by sealing to the underside of the hood via blade-style weatherstripping. Each AIRAID® cold air dam Intake is designed specifically for each vehicle application and offers a simple, trouble-free installation using common hand tools. Like the rest of the AIRAID® systems, the CAD intakes include all the necessary installation hardware and easy-to-understand instructions written with the do-it-yourselfer in mind.

MXP SERIES™ INTAKES

MXP Series represents the ultimate in cold air induction systems. The MXP Series™ intakes start with a new one piece roto-molded air box that addresses all the shortcomings of the restrictive factory design. Then AIRAID® adds a new air intake tube constructed of cross-linked, high-density polyethylene that is designed using extensive computer modeling to maintain proper mass air flow readings and calibration. They also frequently have a built-in velocity stack, which further promotes airflow. What this all means is a simple-to-install system that was designed using extremely sophisticated technology to increase airflow while maintaining proper air / fuel ratios, therefore eliminating the need for re-calibration once installation is complete. Like any other AIRAID® intake system, the MXP Series™ includes an AIRAID® premium filter that is sized to maximize power and efficiency.



AIR-200-185

05-06 Chevrolet Silverado 1500 5.3L & 6.0L
with electric cooling fan and low hood



AIR-203-270

09-14 Chevrolet Suburban 1500 4.8L,
5.3L & 6.2L with electric cooling fan

- CAD style steel air box
- Silicone couplers
- Stainless steel clamps
- Roto-molded intake tube

- Roto-molded air box
- Silicone couplers
- Stainless steel clamps
- Roto-molded intake tube

AIRAID.com



Some intake systems are not legal for sale or use on any pollution controlled motor vehicle in California or states adopting California emission procedures. See AIRAID.com for CARB status on each part for a specific vehicle.

MORE PERFORMANCE INTAKES AVAILABLE ONLINE!



The Performance Intake Company™

M.I.T. & JR. INTAKES

MODULAR INTAKE TUBES

Air is lazy and will always follow the path of least resistance. So, why not give it an easier path into your engine with AIRAID® modular intake tubes! Constructed of cross-linked, high-density polyethylene, the AIRAID® M.I.T. provides a smooth path to the throttle body that flows up to an additional 400 cfm over restrictive stock intake tubes.

With the AIRAID® MIT, additional horsepower and torque can be had with just simple tools and a few minutes for installation. All of the required hardware is included along with easy-to-follow instructions.

AIRAID® modular intake tubes are built specifically for each make and model, and are compatible with stock intakes as well as all other AIRAID® intake systems.

JR. INTAKES

AIRAID® Jr. intakes target the most restrictive elements of factory intake systems: the intake tube and the paper filter. Featuring an AIRAID® premium drop-in replacement filter and an AIRAID® modular intake tube, AIRAID® Jr. intakes help boost horsepower and efficiency for those seeking a simple, economical introduction to the performance market.

As with other AIRAID® intake systems, AIRAID® Jr. intakes help "straighten" and improve clean air flow to the engine for added throttle response, increased horsepower, and more torque. AIRAID® premium drop-in replacement filters further improve airflow to the engine and do a better job of trapping contaminants than stock paper filters. Best of all, AIRAID® drop-in replacement filters are washable, reusable, and fully backed by the company's "No-Hassle" warranty.

Custom made to fit each vehicle, all AIRAID® Jr. intakes are easy to install and require no cutting or drilling.

AIR-400-901

11-14 Ford F-150 3.5L Ecoboost Turbo V6



Stainless steel hose clamps:
Won't rust or corrode over time

One-piece roto-molded intake tubes:
Affected less by engine heat than steel or aluminum tubing

Silicone couplers and hump hoses:
Designed to withstand harsh under-hood environments

- **Silicone couplers/hump hoses**
- **Stainless steel clamps**
- **Roto-molded intake tube**
- **Application specific designs**

- **Drop-in replacement filter**
- **Oiled or dry technology**
- **Washable and reusable**
- **Roto-molded intake tube**



AIR-200-911

2015 GMC Yukon Denali/XL and
Cadillac Escalade/ESV 6.2L V8



AIR-400-701

11-14 Ford F-150 3.5L Ecoboost Turbo V6



AIRAID.com



Some intake systems are not legal for sale or use on any pollution controlled motor vehicle in California or states adopting California emission procedures. See AIRAID.com for CARB status on each part for a specific vehicle.

MORE M.I.T. AND JR. INTAKES AVAILABLE ONLINE!



The Performance Intake Company™

LATE-MODEL INTAKES

MODERN MUSCLE PERFORMANCE PRODUCTS

The modern muscle car wars are in full swing and we all get to benefit from some of the most powerful late-model muscle cars to ever roll off of an assembly line. Whether your preference is a Bowtie, a Blue Oval, or a Mopar, AIRAID® has modern muscle covered.

One of the biggest debuts in the muscle car world is the release of the 2015 Mustang, and AIRAID® offers multiple intake options for the 2.3L Ecoboost, the 3.7L V6, and of course the 5.0L GT. Our MXP Series™ intake system offers solid bolt-on performance gains, while our cold air dam race intake provides maximum airflow and supports other performance modifications. These new systems join our extremely popular line of Mustang cold air intakes for multiple generations of this popular pony car.

Chevrolet fans are all about the newest C7 Corvette, and AIRAID® once again delivers the goods with a complete cold air intake system for the most powerful Vette to ever hit the streets. Our MXP Series™ system for the V6 and V8 Camaro offer simple, solid ways to increase performance with no tuning required. We even offer intakes for lower production Chevy performance applications, including the Cadillac CTS-V and the Camaro ZL1.

Mopar muscle fans have more choices than ever before with the late-model Challenger, Charger, and Chrysler 300C, and AIRAID® has all three engine choices covered: the 3.6L PentaStar, the 5.7L Hemi, and even the fire-breathing 6.4L Hemi in the SRTs. We offer a traditional cold air dam system for these applications as well as the MXP Series™ intake featuring a one-piece roto-molded intake box and engine-specific intake tubes. Regardless of your performance needs and budget, AIRAID® has you covered!

Stainless steel hose clamps:
Won't rust or corrode over time

Silicone couplers and hump hoses:
Designed to withstand harsh under-hood environments

Sealed air box:
Aluminum lid keeps engine heat away from the filter

One-piece roto-molded intake tubes:
Affected less by engine heat than steel or aluminum tubing

Large air inlets:
Allows for more cold air induction

High flow premium filter:
More free-flowing air for better performance over the stock paper filter

- **One-piece roto-molded tube**
- **Oversized roto-molded airbox**
- **Sealed airbox with aluminum or plexiglass lid***
- **Utilizes stock air inlet***

*where applicable

AIR-250-333

2016 Chevrolet Camaro SS 6.2L V8

AIR-450-328

15-17 Ford Mustang 5.0L GT V8

AIR-353-318

11-16 Dodge Charger, Challenger 5.7L V8

AIRAID.com



Some intake systems are not legal for sale or use on any pollution controlled motor vehicle in California or states adopting California emission procedures. See AIRAID.com for CARB status on each part for a specific vehicle.

MORE MODERN MUSCLE INTAKES AVAILABLE ONLINE!



The Performance Intake Company™

TRUCK AND DIESEL SYSTEMS

GAS TRUCK PERFORMANCE

AIRAID's roots are in bolt-on performance for gas-powered trucks. Since the original AIRAID® classic intake for the late '80s TBI Chevy trucks, AIRAID® has specialized in offering bolt-on cold air intake solutions for most popular domestic and import trucks. Today we use the latest cutting edge technology and high-quality materials to build the best cold air intakes for late-model trucks and SUVs.

Modern truck engines are very efficient but are plagued by restrictive factory intakes that hurt performance. AIRAID's MXP Series™ and CAD intakes target all of the restrictive factory components and replace them with free-flowing intake boxes that pull cool outside air while keeping hot engine compartment air away from the filter. That cold air travels through a premium filter that is designed to maximize airflow without sacrificing filtration. A new intake tube further optimizes airflow to the engine while still allowing the MAF sensor (if applicable) to work within factory calibrations. Allowing the engine to breathe in plenty of cool outside air improves power, throttle response, and fuel economy all at the same time.



- **One-piece roto-molded tube**
- **Oversized roto-molded airbox***
- **Utilizes stock air inlet***
- **Silicone couplers/hump hoses**
- **Sealed airbox with aluminum or plexiglass lid***

*where applicable

AIR-403-101

15-16 Ford F-150 3.5L EcoBoost V6

DIESEL PERFORMANCE

Diesel engines are THE choice for heavy hauling. Modern diesel engines produce mountains of torque but also need incredible amounts of air to make power. AIRAID® understands the unique needs of diesel trucks and has developed a complete line of cold air intake systems that deliver plenty of clean, cold air to everything from stock to heavily modified diesel engines.

AIRAID® Cold Air Dam systems utilize specially formed metal panels that keep hot engine compartment air away from the filter while directing in plenty of cool outside air. AIRAID® MXP Series™ systems include a complete replacement roto-molded intake box that utilizes the factory cold air inlet duct while often adding additional cold air inlets. Both types of intakes use massive premium air filters to handle the tremendous airflow requirements of modern turbocharged diesel engines. All AIRAID® diesel intakes work with the factory tuning, so no additional modifications are needed. Aside from additional horsepower and torque, customers frequently report improved fuel mileage and lower EGTs, especially while towing. All in all, AIRAID® offers the best intake solutions for modern diesel trucks.

AIR-200-111

14-16 Chevrolet Silverado / GMC Sierra &
15-16 Cadillac Escalade 6.2L

**Blade style
weather-stripping:**
Mates to the hood to keep engine
heat away from the filter



**One-piece roto-molded
intake tubes:**
Affected less by engine heat
than steel or aluminum tubing

High flow premium filter:
More free-flowing air for better performance
over the stock paper filter

One-piece air box:
Dissipates heat more efficiently
than steel

Large air inlets:
Allows for more cold air induction



AIRAID.com



Some intake systems are not legal for sale or use on any pollution controlled motor vehicle in California or states adopting California emission procedures. See AIRAID.com for CARB status on each part for a specific vehicle.

MORE PERFORMANCE GAS AND DIESEL INTAKES AVAILABLE ONLINE!



The Performance Intake Company™

OFF-ROAD PERFORMANCE

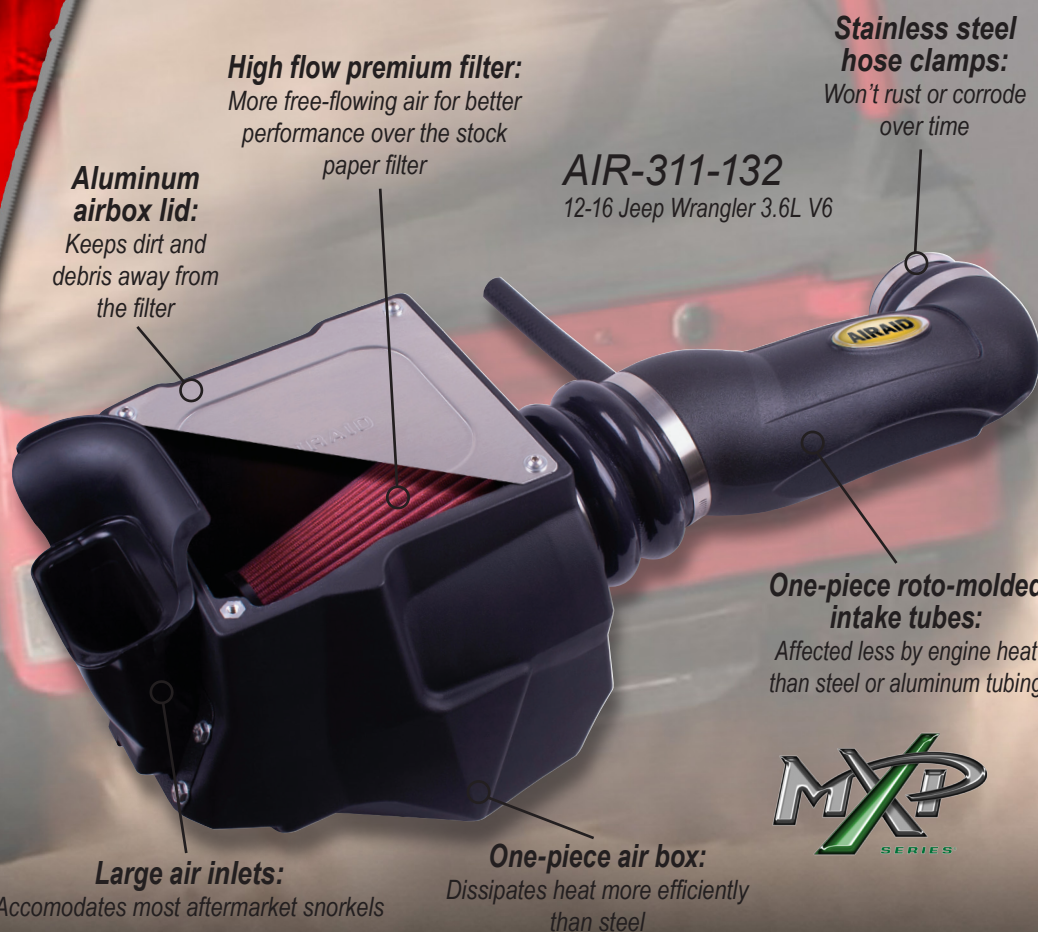
BOLT-ON OFF-ROAD PERFORMANCE INTAKE SYSTEMS

There is no denying that Jeep vehicles are the mainstay of the off-road world. Their compact design, solid axles, and low gearing enable off-road enthusiasts to tackle trails that leave most other makes running back to the pavement. However, with the exception of the Hemi-powered Grand Cherokee, Jeeps have never been known for being powerhouses. Sure, the 4.0L inline six-cylinder is well respected for its low-end torque, but the various four-cylinder engines along with the 3.8L V-6 in the 2007-2011 Wrangler are seriously lacking in the power department. The new 3.6L Pentastar engine in the 2012-2016 Wrangler is a welcome change, but overall, Jeeps need all the help they can get when it comes to making power. Once again, AIRAID® delivers the goods with a complete line of cold air intake systems.

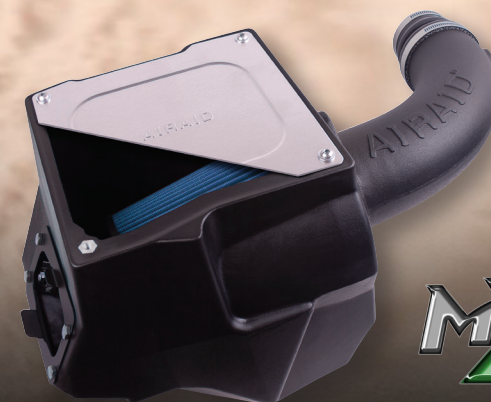
AIRAID® intake systems are available for all of the popular Jeep models, including the Wrangler, Cherokee, Grand Cherokee, Hemi-powered Grand Cherokee, and the fire-breathing SRT8. Each system has been extensively dyno-tested to provide maximum airflow and a steady supply of cold air for more horsepower, torque, and fuel economy. AIRAID® intake systems can also help restore the power lost to heavy vehicle accessories, such as oversize tires, steel bumpers, winches, and rollcages. These Intakes have the same precision fit and finish as the rest of the AIRAID® product line and are backed by our exclusive "No-Hassle" lifetime warranty.

- **One-piece roto-molded tube**
- **Snorkel adaptability**
- **Double hump hose***
- **Sealed airbox with aluminum or plexiglass lid***
- **Utilizes stock air inlet***

*where applicable



AIR-313-276
07-11 Jeep Wrangler 3.8L V6



AIR-310-158
97-06 Jeep Wrangler 4.0L I6



AIRAID.com



Some intake systems are not legal for sale or use on any pollution controlled motor vehicle in California or states adopting California emission procedures. See AIRAID.com for CARB status on each part for a specific vehicle.



The Performance Intake Company™

POWERSPORTS INTAKE SYSTEMS

UTV PERFORMANCE INTAKE SYSTEMS

UTVs have taken the off-road market by storm, with performance attributes that rival those of Jeeps and other compact 4x4s. UTVs are also popular with the go-fast crowd, as their independent suspension and excellent power-to-weight ratios make them well suited to bombing down fire roads. The common denominator for side x sides is dirt, which means good filtration is critical to keeping contaminants from entering the engine and transmission. AIRAID® has developed a complete line of performance intake systems that improve horsepower and torque while providing superior protection to vulnerable engine components.

The AIRAID® intake systems start with an AIRAID® premium filter to increase airflow and provide better filtration in dusty environments. The filter also increases service intervals for more ride time with less maintenance. AIRAID® addresses restrictions in the factory air box by replacing it with a new one-piece roto-molded air box on many applications. These air boxes increase the amount of cool fresh air available for significant power gains; the AIRAID® intake systems have been dyno-tested to provide increases in horsepower and torque.

AIR-883-315
12-15 Kawasaki Teryx 4 750cc



AIR-883-275
08-14 Polaris Ranger RZR 800



AIR-883-300
11-14 Polaris Ranger RZR XP 900



Some intake systems are not legal for sale or use on any pollution controlled motor vehicle in California or states adopting California emission procedures. See AIRAID.com for CARB status on each part for a specific vehicle.

CHECK OUT OUR FULL LINE OF SIDE X SIDE INTAKES ON PAGE ##!



The Performance Intake Company™

POWERAID® SPACERS

THE HELIX BORE IS THE SECRET

Developed to enhance off-idle torque from 800 rpm to approximately 3,000 rpm, PowerAid®'s unique, patented helix bore design spins the incoming air charge as it passes through the throttle body spacer. This spinning action boosts the velocity of the incoming air and contributes to better atomization of the air/fuel mixture as the air charge enters the combustion chamber. The end result is more part-throttle torque, improved mid-range power, and overall combustion efficiency.

AIR-350-532

11-15 Dodge Charger, Challenger,
and Chrysler 300 SRT-8 6.4L V8

Patented helix
bore design

Anodized billet
aluminum

High grade
steel hardware

Gaskets
included

AIR-510-624

05-15 Toyota Tacoma 4.0L V6

AIR-310-616

07-11 Jeep Wrangler 3.8L V6

- **Patented helix bore design**
- **Increases low-end torque**
- **Improves throttle response**
- **Anodized billet aluminum**
- **Proudly made in the USA**

AIR-530-572-P

93-00 Honda Civic SOHC, VTEC,
Non-VTEC, 1.5L, 1.6L

SPACERS WITH POWERPORTS

These spacers were specifically designed with the performance enthusiast in mind. The "-P" on the end of the part number designates that these PowerAid® throttle body spacers are equipped with our PowerPorts™ option. The PowerPorts™ are specially located ports that allow for the use of owner-supplied power enhancements or instrumentation sensors. PowerAid® throttle body spacers come complete with all mounting hardware, port block-off plugs, and easy-to-follow instructions.

AIRaid.com



Some PowerAid® throttle body spacers are not legal for sale or use on any pollution controlled motor vehicle in California or states adopting California emission procedures. See AIRaid.com for CARB status on each part for a specific vehicle.





The Performance Intake Company™

AIRRAID.com



These intake systems are not legal for sale or use on any pollution controlled motor vehicle in California or states adopting California emission procedures.

UBI INTAKE SYSTEMS

U-BUILD-IT CUSTOM INTAKE SYSTEMS

If you can imagine a custom intake system, now you can build it! The U-Build-It (UBI) kit is the most versatile custom intake system on the market. Our master kits include everything you need to build a complete system, and all components are also available individually for maximum adaptability. Whether you are doing an engine swap or have a custom application where space is tight, the AIRAID® UBI intake system can accommodate just about any application. The only limitation is your imagination!

Each UBI master kit and individual intake tubes are available in 3", 3.5", 4", 5", and 6" diameters. The roto-molded intake tubes feature multiple angles and straights that allow you to route the intake to any desired location in the engine compartment. The master kits include an intake tube, coupler, hump hose, reducer, brackets, hose clamps, hardware, and a premium AIRAID® filter.

JUST FOLLOW THESE FOUR SIMPLE STEPS

1. DETERMINE THE DIAMETER OF THE THROTTLE BODY OR AIR CLEANER HOUSING FLANGE ON THE CARBURETOR.
2. DETERMINE THE TUBING DIAMETER. UBI TUBES ARE AVAILABLE IN 3", 3.5", 4", 5", AND 6" DIAMETERS..
3. DETERMINE THE FILTER SIZE. THIS IS USUALLY DICTATED BY THE AMOUNT OF SPACE AVAILABLE.
4. DETERMINE WHAT OTHER ACCESSORIES ARE NEEDED. IF YOU ANTICIPATE NEEDING ADDITIONAL COUPLERS OR BRACKETS, THEY CAN BE ORDERED INDIVIDUALLY.

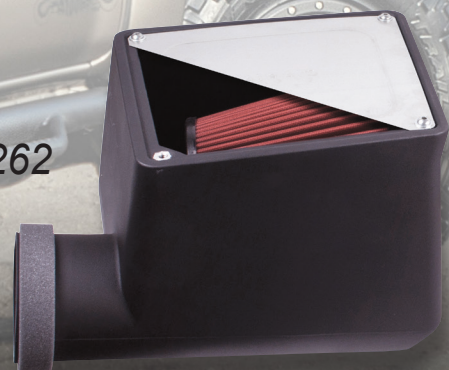
U-BUILD-IT COMPONENTS

Determine what other accessories are needed. Master kits include one hump hose, one silicone coupler, and one reducer coupler, as well as a variety of intake tube support brackets. If you anticipate needing additional couplers or brackets, they can be ordered individually. Note that hump hoses are best used at joints that will experience high vibration, such as an engine-mounted tube connected to a body-mounted air box or filter. We offer A-body and F-body specific Cold Air Dam panels as well as a universal air box for those that want a more sealed air box design. We also offer an assortment of Universal MAF adapters that make it easy to mount a mass-air sensor on your new custom intake system.

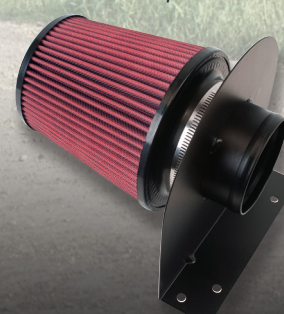
AIR-101-401
4" Universal Master kit



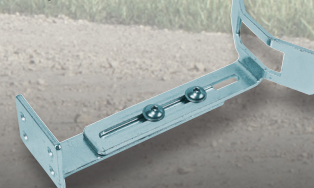
AIR-100-262
Universal airbox



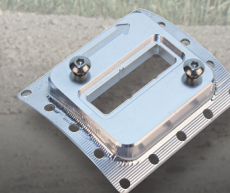
AIR-100-211
Universal panels



AIR-9505
Adjustable tube bracket



AIR-9701
MAF sensor plates



AIR-9641



AIR-9619



AIR-9620



MAF & tube adapters

GO TO AIRAID.COM FOR A COMPLETE SELECTION OF UBI COMPONENTS AVAILABLE



The Performance Intake Company™

2017 PERFORMANCE CATALOG

FOLLOW US ON SOCIAL MEDIA



AIRAID.com

1-800-498-6951 • 1455 CITRUS STREET, RIVERSIDE CA 92507 • 2017 AIRAID FILTER COMPANY • 2-17